

2017

ANNUAL REPORT

United Nations | Central
CERF | Emergency
Response
Fund



UNITED NATIONS

FOR ALL, BY ALL

The results described in this report could not have been achieved without our donors' generous contributions, which allowed the fund to allocate \$418.2 million for life-saving action in 2017. This invaluable support benefited millions of people in crisis situations worldwide, reflecting the global solidarity of CERF donors, their commitment to saving lives wherever crises strike and their trust in the fund.

As a revolving fund, CERF may disburse more or less than its income within a calendar year.

Other donors*

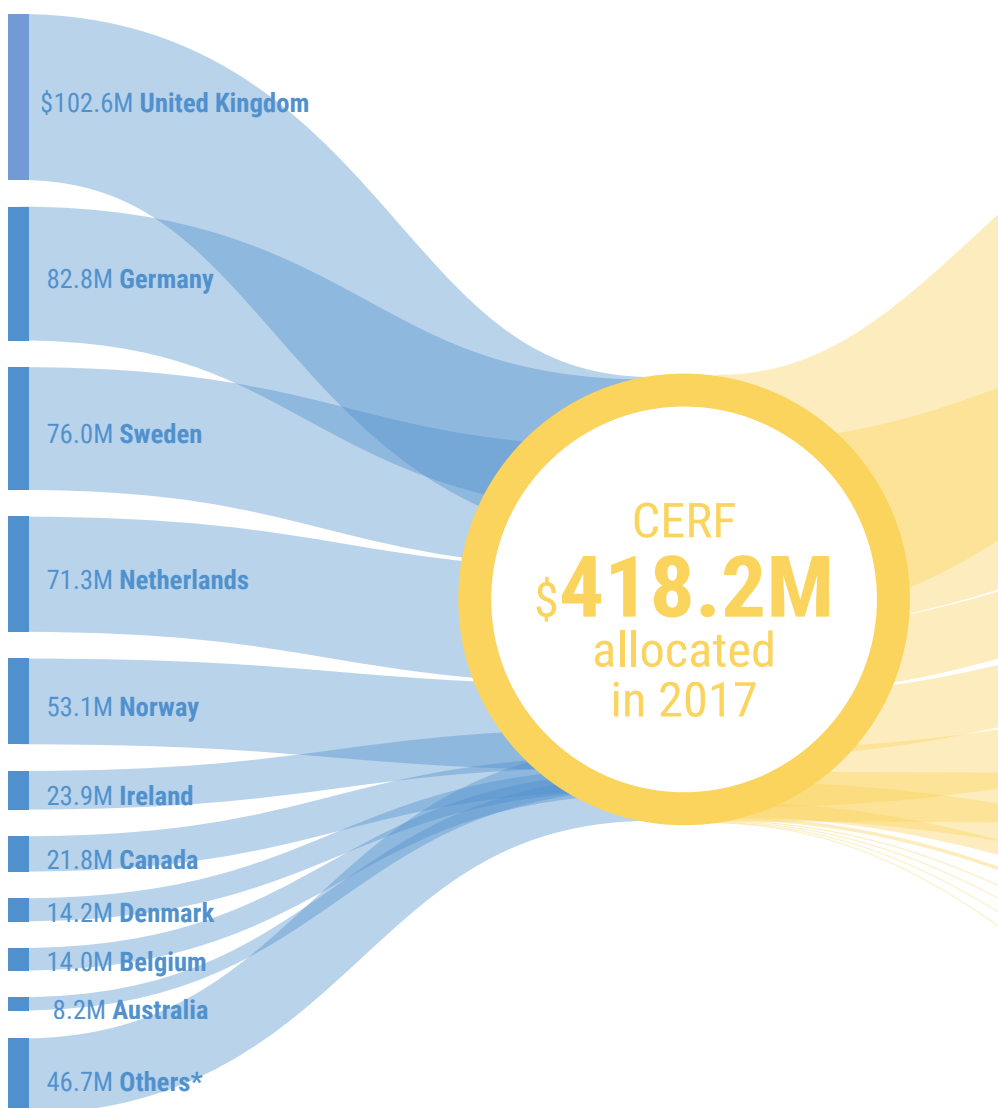
Donor	Contributions received (US\$)
Finland	7,511,000
Switzerland	6,041,234
United States of America	5,000,000
Luxembourg	4,872,780
Republic of Korea	4,000,000
Spain	3,475,600
Italy	2,470,400
New Zealand	2,176,800
Russian Federation	1,500,000
Japan	1,402,809
United Arab Emirates	1,250,000
Kuwait	1,000,000
Qatar	1,000,000
Iceland	765,714
Belgian Government of Flanders	625,860

2017 CERF DONORS

56 MEMBER STATES AND OBSERVERS

1 LOCAL AUTHORITY

MULTIPLE PRIVATE SECTOR AND INDIVIDUALS



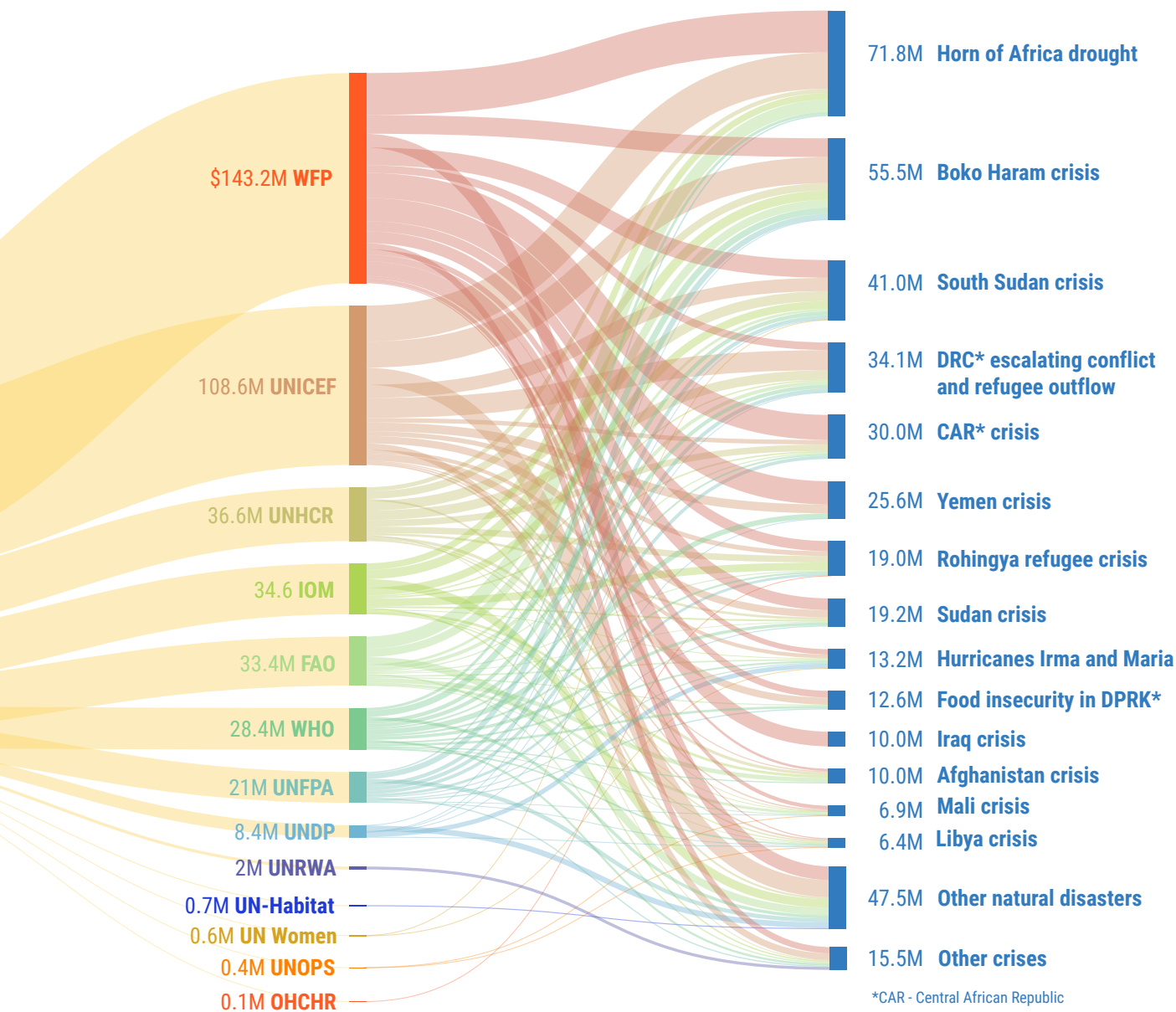
Donor	Contributions received (US\$)	Donor	Contributions received (US\$)
India	500,000	Colombia	112,500
China	500,000	Estonia	106,220
South Africa	487,257	Portugal	104,110
Turkey	450,000	Slovakia	60,155
Al Jisr Foundation	250,000	Monaco	52,428
Indonesia	220,000	Private donations through UN Foundation	51,088
Liechtenstein	200,541		
Saudi Arabia	150,000	Singapore	50,000

IMPLEMENTING PARTNERS

13 UN AGENCIES

CRISES

IN 36 COUNTRIES



*CAR - Central African Republic
 DRC - Democratic Republic of the Congo
 DPRK - Democratic People's Republic of Korea

Donor	Contributions received (US\$)	Donor	Contributions received (US\$)	Donor	Contributions received (US\$)
Kazakhstan	50,000	Waterloo Foundation	13,192	Sri Lanka	5,000
Philippines	50,000	Cyprus	11,662	Armenia	5,000
Chile	40,000	Myanmar	10,000	Peru	4,006
Czech Republic	38,170	Viet Nam	10,000	San Marino	2,487
Andorra	23,866	Pakistan	10,000	Bhutan	1,500
Lithuania	21,734	Côte d'Ivoire	10,000	Sovereign Military Order of Malta	1,000
Thailand	20,000	Private donations outside UN Foundation	6,854		
Bulgaria	20,000				



Badoul Idriss, 16 years old, is
in Danamadja School, Chad.
© UNICEF Chad/Alliah



United Nations
CERF

**2017
ANNUAL
REPORT**

United Nations
Central Emergency
Response Fund
(CERF)

CONTENTS

8 FOREWORD

1

10 ABOUT CERF

12 *HOW CERF WORKS*

14 *HOW FUNDING IS ALLOCATED*

2

16 HUMANITARIAN ACTION IN 2017

18 *OVERVIEW OF ALLOCATIONS*

26 *CERF AND CONFLICT-RELATED/ PROTRACTED CRISES*

28 *The Democratic Republic of the Congo (DRC)*

30 *Yemen*

32 *Rohingya refugee crisis*

36 *CERF AND NATURAL DISASTERS*

38 *Hurricanes Irma and Maria*

40 *Drought in the Horn of Africa*

44 *CERF RESPONSE TO THE GLOBAL DISPLACEMENT CRISIS*

3

50 CERF DONORS

4

52 CERF MANAGEMENT

- 52 *TRANSPARENCY*
- 53 *CERF COUNTRY REVIEWS*
- 53 *MONITORING*
- 54 *CERF ADVISORY GROUP*
- 56 *GLOBAL REACH THROUGH
CERF PARTNERSHIPS*
- 58 *ADVOCACY AND
ENGAGEMENT*
- 59 *COMMITMENT TO
LEARNING*

5

60 CERF FOR THE FUTURE

62 ANNEXES

CREDITS

This document is produced by the United Nations Office for the Coordination of Humanitarian Affairs (OCHA). OCHA wishes to acknowledge the contributions to this document, particularly those from the programmes, funds and specialized agencies of the United Nations system.

Cover photo:

Saboule Ousmane, 17 years old is currently in grade 4 at Danamadja School in Chad.
© UNICEF Chad/Alliah

Editing and Graphic Design:

OCHA New York

For additional information, please contact:

OCHA Donor Relations Section: ocha.donor.relations@un.org
CERF secretariat: cerf@un.org

The boundaries and names shown and the designations used on this report do not imply official endorsement or acceptance by the United Nations. Final boundary between the Republic of Sudan and the Republic of South Sudan has not yet been determined.

Map source: United Nations Geospatial Information Section

Numbers are rounded. Denominations are represented in United States dollars.

Foreword

Under-Secretary-General and Emergency Relief Coordinator Mark Lowcock discusses the health and nutrition situation among people displaced by the South Sudan conflict with Dr. Joice Dominic in Gezira, near Yei Town. © UNMISS/ Eric Kanalstein



I have long been a champion of CERF, having seen its positive effect in humanitarian crises around the world. On some of my very first missions as Emergency Relief Coordinator in 2017, I saw how CERF funding changed the lives of many. Rohingya refugees crossing the

borders towards safety and many other displaced families around the world all received fast and effective support from CERF. It is, without question, one of our most important tools to reach people quickly and save lives.

CERF was one of the first responders to the warning signs of famine in north-east Nigeria, Somalia, South Sudan and Yemen. CERF released US\$128 million to support the most critical early action and famine-prevention activities, making it one of the largest funding sources of the four affected countries in the early stages of the response.

Throughout the year, the fund enabled its partners to provide urgent aid to millions of people in desperate need of help. This would not have been possible without the support of CERF's donors; they helped the fund to achieve a historic milestone in 2017 by hitting record-level funding of \$514.6 million and surpassing its minimum annual funding target by \$64 million.

But while we celebrate CERF as our shared success, we also face significant challenges. The global humanitarian appeal rose to \$24 billion—the highest in its history. By the end of 2017, CERF had allocated \$418.2 million to help those most in need in 36 emergencies.

We need a larger CERF so that more people will be reached with life-saving aid at the earliest stages of crises. New strategies and approaches are being developed in close

consultation with partners and in sync with increasing funding available to CERF. For example, there is an increasing recognition that CERF could fill a critical gap in promoting life-saving anticipatory action ahead of imminent emergencies, such as famines, based on forecasts and early warning indicators.

An expansion of CERF's funding target is also an opportunity to define what CERF could do differently to facilitate a more robust and predictable response to infectious disease outbreaks. For example, by providing funds early – like it did for the Ebola outbreak in DRC in 2018 – CERF can help prevent a situation from deteriorating rapidly.

A strong CERF able to deliver on its mandate is every Member State's responsibility, and a step towards our commitments to leave no one behind and reach the furthest left behind first.

MARK LOWCOCK

Under-Secretary-General for Humanitarian Affairs and Emergency Relief Coordinator

1 | About CERF

CERF is one of the fastest and most effective ways to ensure that urgently needed humanitarian assistance reaches people caught up in crises. Established by the United Nations General Assembly in 2005 as the United Nations global emergency response fund, CERF enables humanitarian responders to deliver life-saving assistance whenever and wherever crises strike.

As an essential enabler of global humanitarian action, CERF allows country teams to kick-start relief efforts immediately in a coordinated and prioritized response when a new crisis emerges. It also helps scale-up and sustain protracted relief operations to avoid critical gaps when no other funding is available.

Since its inception, 126 UN Member States and observers, as well as regional Governments, corporate donors, foundations and individuals, made it possible for humanitarian partners to deliver over \$5 billion in life-saving assistance in over 100 countries and territories.

Each year, on average, CERF grants have helped humanitarian partners deliver critical health care to 16.1 million people, water and sanitation to 9.7 million people, food

assistance to 7.1 million people, protection to 4.3 million people, agriculture support to 3 million people, nutrition to 2.7 million people and shelter to 1.7 million people.¹ In addition, the fund supports services for refugees and displaced people, nutrition programmes, mine action, emergency education and camp management for millions of people in need.

The humanitarian context in which CERF operates today is very different from that of more than a decade ago when it was established. Crises have increased in frequency, scale, magnitude and duration, and the number of people in need has tripled since 2006. UN-led humanitarian response plans required \$5.2 billion to provide the most vulnerable people with assistance in 2016, but by 2017 requirements had risen to \$23.6 billion. Yet throughout this period, CERF's annual funding target of \$450 million remained unchanged, and the share of global funding met through CERF funding declined from 9 per cent in 2006 to 1.9 per cent in 2017.

¹ Includes averages from 2015 - 2017. As part of ongoing enhancements to the CERF reporting framework and the quality of reports, the CERF secretariat put in place an improved methodology of reporting and processing the information on people reached. Improvements resulted in clearer distinction between people benefiting directly and indirectly from CERF-funded humanitarian action, leading to more accurate figures.

Recognizing the clear need for more substantial and more strategic humanitarian financing, and considering the impressive track record of CERF in resourcing life-saving assistance for crisis-affected people, the UN General Assembly endorsed the Secretary-General's call to expand CERF's annual funding target to \$1 billion. In its resolution A/RES/71/127 of December 2016, the General Assembly called upon all Member States and the private sector to ensure a fully funded \$1 billion CERF commensurate with today's humanitarian needs.

” With millions of people in urgent need for humanitarian assistance, the role of CERF is as critical as ever. Iceland is proud to have a newly signed framework agreement with CERF of unearmarked core contributions. I firmly believe CERF is one of the most efficient ways to get urgent aid to the people who need it the most.

— Guðlaugur Þór Þórðarson, Minister of Foreign Affairs, Iceland

On average, each year CERF grants help humanitarian partners to deliver:



CRITICAL HEALTH CARE TO 16.1 MILLION PEOPLE



WATER AND SANITATION TO 9.7 MILLION PEOPLE



FOOD ASSISTANCE TO 7.1 MILLION PEOPLE



PROTECTION TO 4.3 MILLION PEOPLE



LIVELIHOOD SUPPORT TO 3 MILLION PEOPLE



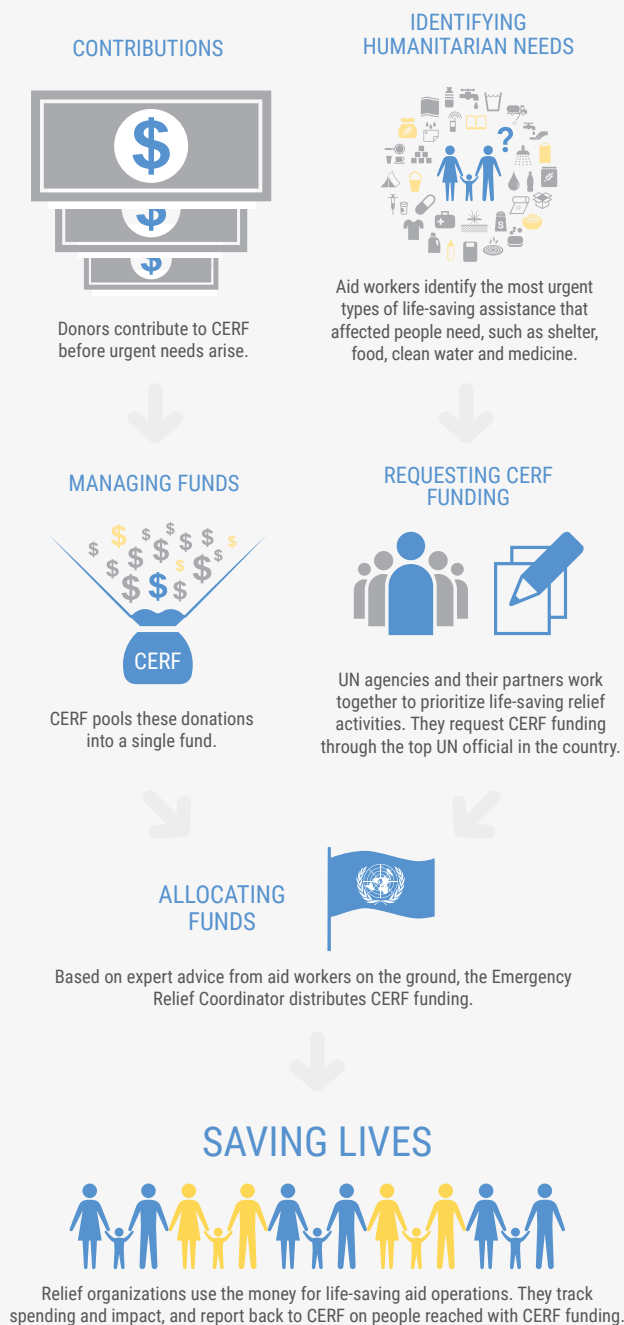
NUTRITION SUPPORT TO 2.7 MILLION PEOPLE



SHELTER TO 1.7 MILLION PEOPLE

... as well as support services for refugees and migrants, mine action, emergency education and camp management for millions of people in need.

How CERF works



How CERF works

Time lost means lives lost. Disasters and conflict can cut people off from the bare necessities for survival, including urgent health care, food, clean water, sanitation, shelter, protection and much more. The effect can be devastating and often immediate. CERF provides a fast and efficient way to channel support to people across the globe at times of great need. It presents a unique opportunity to invest in a humanitarian funding mechanism that adds life-saving value to every dollar spent.

Each year, CERF pools contributions from donors around the world into a single fund, allowing humanitarian responders to deliver life-saving assistance whenever and wherever crises hit. Contributions to CERF are fully unearmarked to ensure resources meet the most urgent, life-saving needs.

CERF provides funding when financial support from the fund has the highest potential for saving lives. This can be at three distinct stages of an emergency:

- At the beginning, when quick resources can jump-start a humanitarian response.
- When an ongoing crisis is rapidly deteriorating.
- When a crisis fails to attract enough funds to enable an effective response.

During emergencies, humanitarian organizations on the ground jointly assess and prioritize humanitarian needs and, when applicable, apply for CERF funding. The CERF secretariat supports decision makers at country level to ensure an effective and efficient strategic prioritization and application process. As-

certaining who are the people most in need requires joint planning and prioritization by United Nations Resident Coordinators/Humanitarian Coordinators (RC/HCs), humanitarian country teams and humanitarian partners, to ensure the most strategic and coherent use of CERF funds in each emergency. Funds are immediately released when a country team proposal meets CERF criteria, i.e. if the needs are clearly urgent and the proposed activities will undoubtedly save lives.

CERF's unique added value is demonstrated by the humanitarian country teams and ultimately the decision-making role of the Emergency Relief Coordinator (ERC) in prioritizing CERF funding according to the level and urgency of the needs in a given emergency. The ERC manages the fund on behalf of the Secretary-General and approves CERF grants. UN organizations are directly eligible to receive CERF funding and implement grants in partnership with local and international non-governmental organizations (NGOs), host Governments and Red Cross/Red Crescent societies.

CERF allocations are designed to complement other humanitarian funding sources, such as country-based pooled funds (CBPFs). CERF and CBPFs are designed to meet specific humanitarian funding requirements. Used jointly and strategically, they are powerful funding tools for the humanitarian community. By leveraging their comparative advantages – including CERFs' disbursement speed and global reach and CBPFs' ability to directly fund local NGOs – the strategic use of these funds helps partners deliver a stronger collective response, ensuring maximum impact of limited resources.

About country-based pooled funds

CBPFs are established by the ERC in certain protracted emergencies based on the specific context and on expressions of interest by donors. Contributions from around the world are collected into single, unearmarked funds to support local humanitarian efforts. The 18 CBPFs active in 2017 received \$824 million combined. CBPFs are directly available to a wide range of relief partners on the front lines of the response through an inclusive and transparent process aligned with priorities set out in crisis-specific Humanitarian Response Plans (HRPs).

CBPFs ensure that funding is available and prioritized at the local level by those closest to people in need. CBPFs empower humanitarian leadership and foster collaboration and collective ownership of emergency response.

For more on the CBPFs, visit: <http://bit.ly/GiveToCBPFs>



Donating to CERF is one of the fastest ways to get urgent assistance to people in need. CERF also provides vital grants for underfunded crises. Norway is therefore proud to be stepping up our support to CERF by providing multi-year funding, with a view to ensuring effective humanitarian response.

– Ine Eriksen Søreide, Minister of Foreign Affairs of Norway.

How funding is allocated

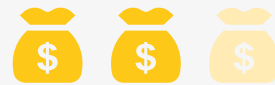
In every case, CERF grants are dictated by needs on the ground. CERF has a Rapid Response window and Underfunded Emergencies window. Approximately two thirds of the entire grant in any year are earmarked for Rapid Response, and up to one third is reserved for Underfunded Emergencies.

CERF life-saving criteria

To ensure that it remains rigorous and focused in selecting projects to support, the allocation of funds is guided by CERF's life-saving criteria. These guidelines have been established through consultations with UN agencies and other humanitarian partners and provide a framework for determining critical needs to prioritize in accordance to CERF's humanitarian mandate. The criteria reflect the basic humanitarian principle of focusing first, in a crisis, on the people in need and the affected communities. They recognize the rights of all people as defined by the Universal Declaration of Human Rights, particularly the right to life with dignity.

RAPID RESPONSE FUNDS

Rapid Response funds are requested by RC/HCs as seed money to launch life-saving, humanitarian activities in the initial days and weeks after a sudden-onset crisis has been triggered. CERF Rapid Response grants are intended to instigate the response while funds are being mobilized through the voluntary contribution system. CERF Rapid Response funds may also be used to respond to time-critical needs or a significant deterioration in an existing emergency.



At least **2/3** of
CERF funding is
set aside for Rapid
Response allocations.

”

CERF continues to enable early humanitarian action by allocating funding quickly to support the most critical needs, sometimes within hours a disaster strikes. In 2017, CERF was one of the first responders to the warning signs of food insecurity in South Sudan, Somalia, north-east Nigeria and Yemen, effectively keeping famine at bay. Denmark will continue to be a strong supporter of CERF so that funding is available before disasters arrive and enable early response that effectively contains the impact of humanitarian shocks.

— Ms. Ulla Tørnæs, Minister for Development Cooperation of Denmark

UNDERFUNDED EMERGENCIES GRANTS

Underfunded Emergencies grants support critical needs in underfunded and often protracted crises. Twice a year, Underfunded Emergencies funds are allocated towards the world's least funded and most neglected crises. Emergency operations with significant unmet humanitarian needs are eligible for Underfunded Emergencies support. The ERC selects target countries based on quantitative data analysis of humanitarian needs, risk and vulnerability and funding to date, and qualitative, contextual information gleaned from consultations with UN agencies, OCHA headquarters, NGOs and other public sources. Crises with a HRP, as well as those with major humanitarian needs requiring multisectoral response, but without an HRP or comparable appeal (referred to as non-HRP countries), can be considered for Underfunded Emergencies grants.

Emergencies selected for Underfunded Emergencies grants are those that have not attracted or are unlikely to attract sufficient and timely funding for necessary life-saving activities, and where the highest level of risk and vulnerability are evidenced by rigorous analysis and broad consultation.

Having taken the final decision as to which countries will be included in the Underfunded Emergencies round and the amount of funding that will be allocated for each emergency, the ERC informs the RC/HCs in selected countries of the decision. CERF guides the RC/HCs in the next steps of the strategic prioritization process.

LOAN FACILITY

CERF has a loan facility of \$30 million. When a UN agency, fund or programme experiences a cash flow problem when attempting to provide a rapid and coordinated response to a humanitarian emergency, a loan for up to one year may be requested towards immediate response activities. The ERC determines the amount to be advanced in each situation.

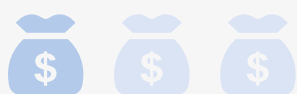
”

CERF support enables FAO to reach crisis-hit people fast. In early 2017, when famine appeared imminent in Somalia, a \$4 million grant in addition to a \$22 million loan from CERF kick-started FAO's time-critical response, enabling us to safeguard livelihoods, maintain food production despite intense drought and save lives.

— José Graziano da Silva, Food and Agriculture Organization Director-General



A medical practitioner uses a measuring tape on a child suffering from severe acute malnutrition in Bani Al-Harith, Sana'a, Yemen. © UNICEF/Almang



Up to **1/3** of CERF funding is channelled through the Underfunded Emergencies window.

2 | Humanitarian action in 2017

2017 was an exceptionally challenging year in which the humanitarian community encountered an alarming level of needs worldwide. At the beginning of the year, \$22.2 billion was required to help more than 92 million people in need of humanitarian assistance in 33 countries.¹ The global humanitarian appeal launched on 5 December 2016 for 2017 was the largest humanitarian appeal ever announced.

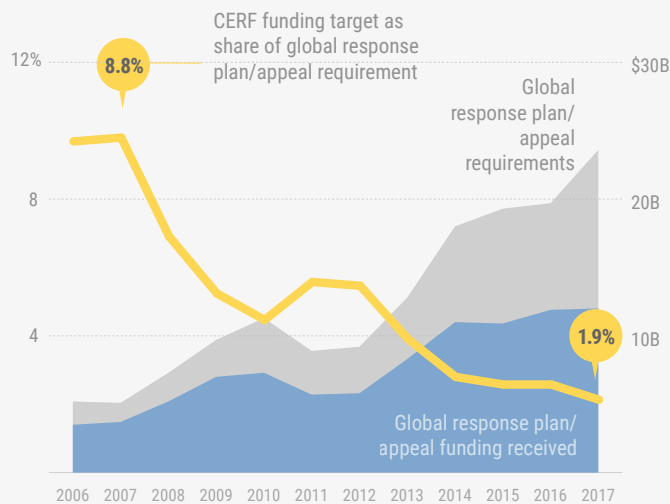
¹ OCHA Global Humanitarian Overview (2017): www.unocha.org/sites/unocha/files/GHO_2017.pdf

Throughout the year, crises grew more severe, protracted and complex, particularly in the Democratic Republic of the Congo (DRC), Iraq and Yemen. Catastrophic storms and widespread floods affected hundreds of communities. Afghanistan, the Lake Chad Basin and the Horn of Africa were afflicted by protracted and to some extent forgotten emergencies. By the end of 2017, global humanitarian appeal requirements rose to \$24.7 billion to help 105.1 million people in need. Donors provided record levels of funding to support humanitarian activities. By December 2017, funding to UN-coordinated appeals had reached \$13.8 billion and an additional \$6.6 billion for funding outside these appeals. CERF's contributions amounted to \$418.2 million, or 1.98 per cent of the total global humanitarian funding for the year, compared to 1.91 per cent in 2016.²

Every emergency is unique but for two elements: severe human suffering and the urgent need for resources to ease and eradicate that suffering. In 2017, humanitarian agencies reached more people in need than ever before. CERF was quick to respond throughout the year, helping partners to kick-start relief efforts immediately when needs were revealed.

² Funding outside the requirements of UN-coordinated appeals includes support for organizations and/or activities that are not part of HRPs. This typically includes reporting funding towards the International Red Cross and Red Crescent Movement (ICRC and IFRC), some NGOs, as well as bilateral contributions channelled directly from one Government to another. It may also include core funding for humanitarian organizations and funding to crises that do not have HRPs. More information is available on OCHA's Financial Tracking Service at fts.unocha.org

CERF funding target as a share of global humanitarian needs



CERF was one of the first resources to be released following warning signs that 20 million people were facing near-famine conditions in north-east Nigeria, South Sudan, Somalia and Yemen. By the end of August 2017, CERF had released \$128 million to support the most critical early action and life-saving activities prioritized by humanitarian country teams on the ground, making it one of the largest funding sources for the four affected countries in the early stages of the response.

Just days after Hurricanes Irma and Maria swept through the Caribbean in September 2017, causing catastrophic damage, CERF allocated \$13 million to support the national and regional response and provide food, critical health care, clean water and other urgently needed aid to the people most affected.

CERF also remained a lifeline for people caught up in the world's most underfunded and protracted crises that were failing to attract adequate resources. In January 2017, the fund released \$100 million to sustain aid operations in nine neglected emergencies. The largest CERF allocation of the year was intended to reach more than 6 million people in Cameroon, DPRK, Libya, Madagascar, Mali, Niger, Nigeria, Somalia and Uganda, where levels of vulnerability were alarmingly high but funding had remained critically low. In August 2017, the ERC allocated \$45 million for the second round Underfunded Emergencies, supporting 1 million people in the drawn-out conflict and displacement crises in Afghanistan, CAR, Chad and Sudan. These four countries were experiencing some of the world's most protracted crises, lasting 15 years or more.

In response to the world's fastest growing refugee crisis, CERF allocated \$19 million in two tranches in September and October to assist the most vulnerable people fleeing violence in Myanmar's Rakhine State and their host communities in Bangladesh.

Despite challenges in meeting increasing requests for emergency funding, CERF allocations saved lives in these and other crises in 2017. However, due to the overwhelming number of requests and the limited amount of funding available, CERF was obligated to reduce amounts allocated to certain crises.

For example, in Sudan, a request for \$9 million for assistance to conflict-affected people was met with a limited grant of \$5 million. Anticipated food rations were halved and the number of households assisted with livelihood support was reduced by one third.



In Nigeria, of the \$20 million requested through CERF for famine prevention, only \$10 million could be allocated. Consequently, there was a lack of funds to finance assistance to returning displaced people.

A young girl stands alongside a herd of sheep at the Mangaize refugee camp in Niger.
© UNICEF/Tremeau

In Cuba, a grant of \$8 million fell short by \$2.4 million of the amount requested. As a result, 8,000 people remained at risk of inadequate shelter, 25,000 people had no access to vital reproductive health services, including safe infant delivery equipment, 56,000 people did not receive water purification tablets and safe water storage supplies, and 559,000 people had food rations reduced from 30 to 22 days.

Overview of allocations

In 2017, CERF allocated \$418.2 million towards humanitarian assistance in 36 countries. Allocations included \$273.2 million under the Rapid Response window and \$145 million through the Underfunded Emergencies window. The ERC also approved two loans: \$22 million to FAO in March to respond to drought-affected regions of Somalia, and \$20 million to the United Nations Relief and Works Agency (UNRWA) to address health and food needs in the occupied Palestinian territory (oPt), Jordan, Syria and Lebanon.

Partners used CERF allocations in a range of humanitarian emergencies. A total of \$271.6 million—or 65 per cent of CERF allocations—financed projects aiding people affected by conflict or internal strife. The countries with

the highest levels of CERF funding linked to conflict or internal strife were Nigeria (\$31.9 million), Sudan (\$29.6 million), DRC (\$26.6 million), and Yemen (\$25 million).

The second major focus in 2017, as with 2016, was climate-related natural disasters. A total of \$140 million was allocated for operations triggered by meteorological, hydrological and climatological events. CERF response to climate-related natural disasters included \$91.7 million to address needs in drought-ravaged countries, \$19 million to meet flood-induced needs and \$28.3 million to respond to cyclones, typhoons and hurricanes. In Mongolia, CERF allocated \$1.1 million to address needs related to extreme temperatures.

BY WINDOW

Rapid Response window

From 1 January through 31 December 2017, the fund provided \$273.2 million to 31 countries through the Rapid Response window. The highest levels of funding were received by Ethiopia, with \$28.5 million allocated in response to drought, DRC, where \$26.6 million was allocated in response to conflict, and Yemen, where \$25.6 million was allocated in response to conflict and disease outbreak. Fifty-seven per cent of Rapid Response funding in 2017 addressed critical needs caused by conflict. Response to natural disasters represented 42 per cent of CERF funding in 2017, with 25 per cent directed towards drought response and 10 per cent towards hurricane and cyclone response.

Underfunded Emergencies window

In 2017, the ERC approved \$145 million through the Underfunded Emergencies window for humanitarian efforts in 13 countries. Nearly 80 per cent of the funds provided through that window went to assist people affected by conflict and displacement. The highest amounts were for responses to crises in Nigeria (\$22 million for internally displaced persons [IDPs], returnees and host communities), Somalia (\$18 million for severe drought conditions), Uganda (\$15 million for South Sudanese refugees), and Sudan (\$14.2 million for IDPs, refugees and host communities).

Funding by window in US\$ million

\$273.2M RAPID RESPONSE

\$145M UNDERFUNDED EMERGENCIES

In January 2017, in the first round of the Underfunded Emergencies window, \$100 million was allocated to support life-saving assistance for people affected by humanitarian emergencies in nine countries. CERF allocated \$70 million to address the needs of 2.2 million people displaced by conflict and severe drought in Nigeria, Uganda, Cameroon, Niger, Libya and Mali. Grants totalling to \$24 million benefited 2.2 million people affected by severe drought and food insecurity in Somalia and Madagascar, and \$6 million permitted the reduction of maternal and under-five child mortality and morbidity in DPRK, benefiting nearly 825,000 people.

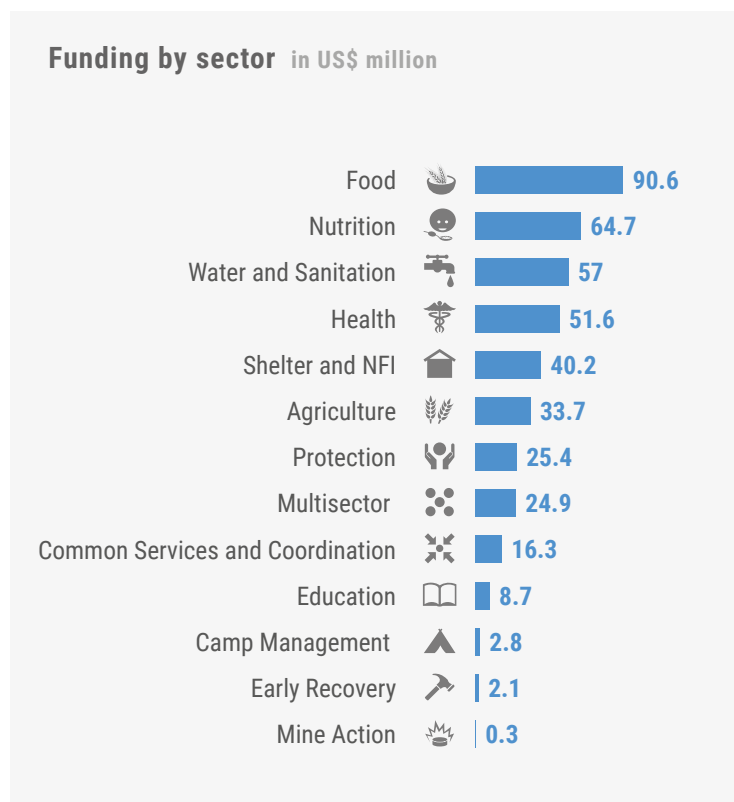
The second round of allocations of \$45 million funded efforts to reach nearly 1 million people in Afghanistan, CAR, Chad and Sudan, with the intention to reach nearly 1 million people affected by internal conflict and insecurity in neighbouring countries and by recurrent natural disasters. The funds allowed UN agencies and their local partners to provide extensive support, including critical health care, food assistance and access to clean water and sanitation.

Nearly 80 per cent of the funds provided in 2017 through the Underfunded Emergencies window were channelled into assistance for people affected by conflict and displacement. The highest amounts were \$22 million for assistance to IDPs, returnees and host communities in Nigeria, \$18 million for people suffering drought conditions in Somalia and \$15 million for South Sudanese refugees in Uganda.

BY SECTOR

Just over a quarter of CERF funding allocated in 2017 was directed towards food security, making this the highest funded sector of the year. A total of \$90.6 million was allocated for food aid, and \$33.7 million was allocated for agriculture, including livestock. Taking an additional \$64.7 million allocated for nutrition assistance into account, the combined total for food security and nutrition reached \$188.9 million, or 45 per cent of all CERF funds allocated in the year. The proportion of overall CERF funding allocated to food security and nutrition in 2017 was 7 per cent higher than in 2016.

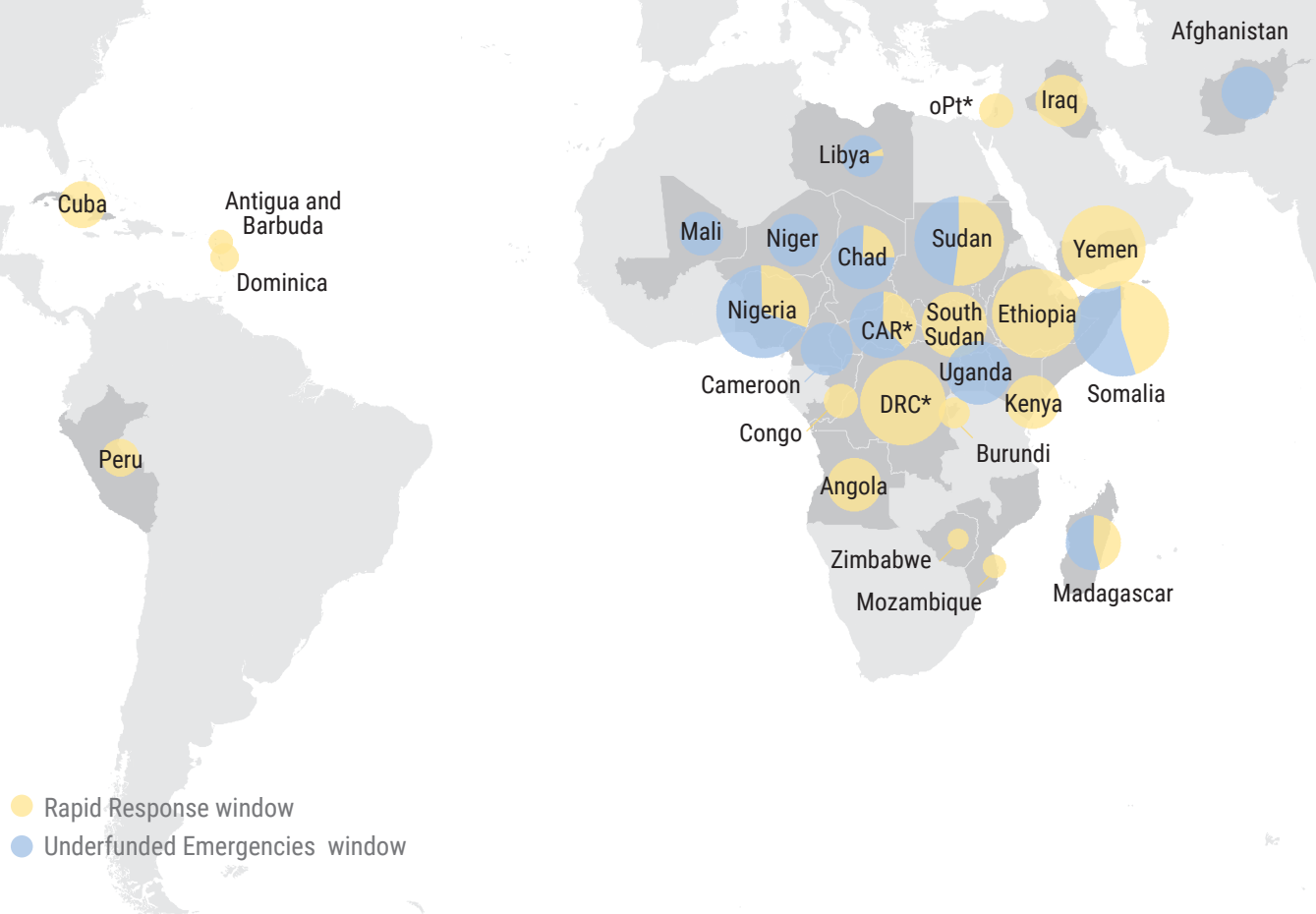
In 2017, \$57 million was allocated for water and sanitation-related humanitarian response. Another \$51.6 million was allocated to health-related interventions, of which \$34.2 million was allocated for conflict-related crises and \$15.2 million for climate-related crises.



In 2017, CERF allocated

\$418.2 million
for life-saving operations in

36 countries

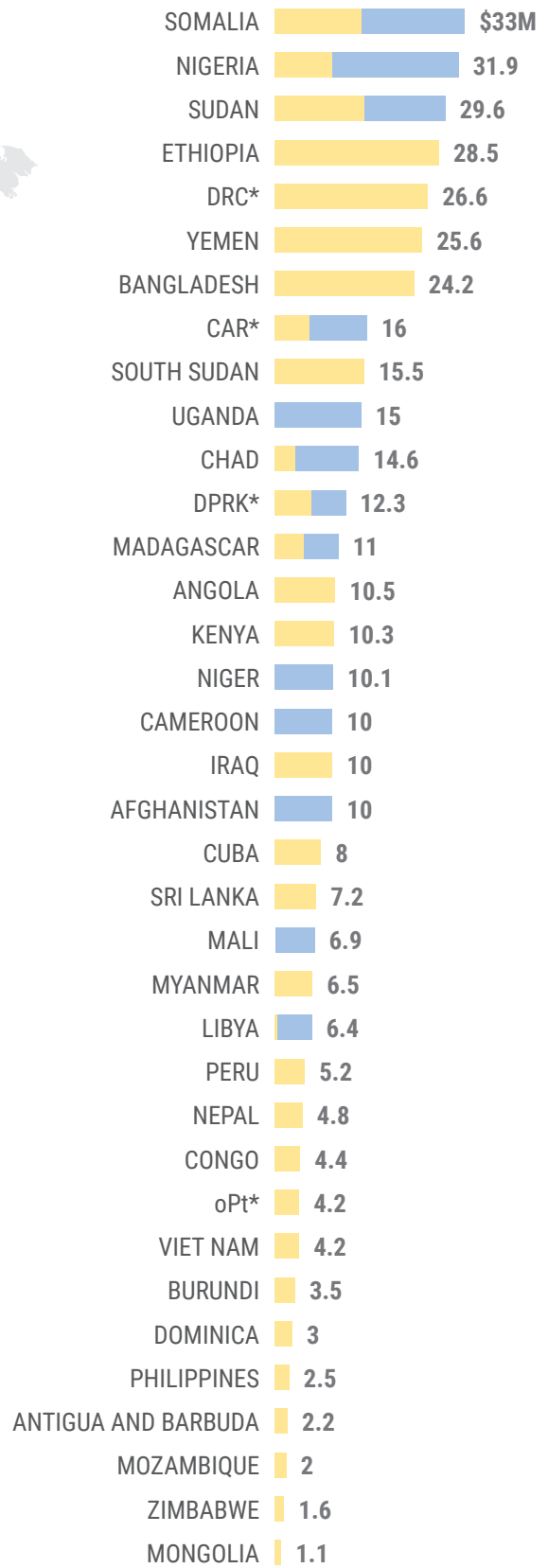


- Rapid Response window
- Underfunded Emergencies window

* CAR - Central African Republic
DRC - Democratic Republic of the Congo
DPRK - Democratic People's Republic of Korea
oPt - occupied Palestinian territory



Funding by country in US\$ million



Allocations timeline

January

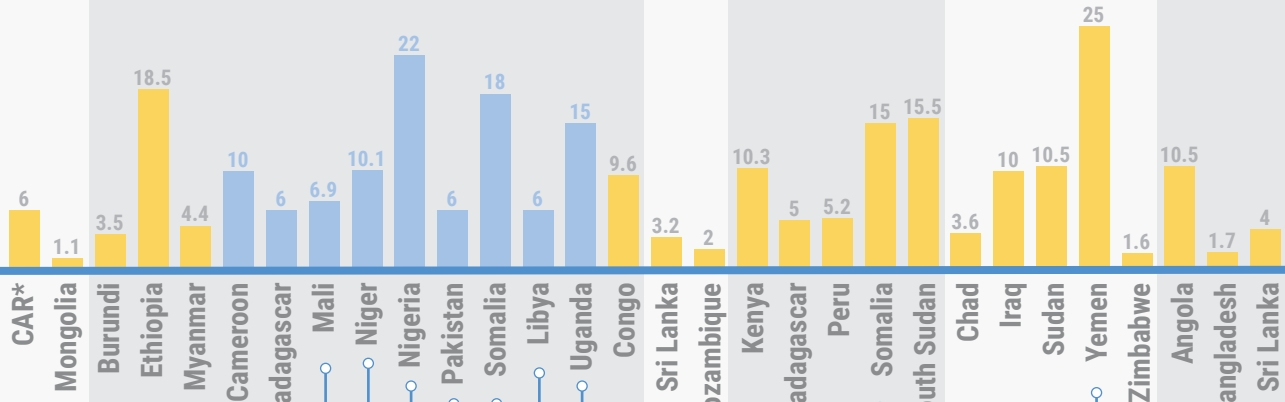
February

March

April

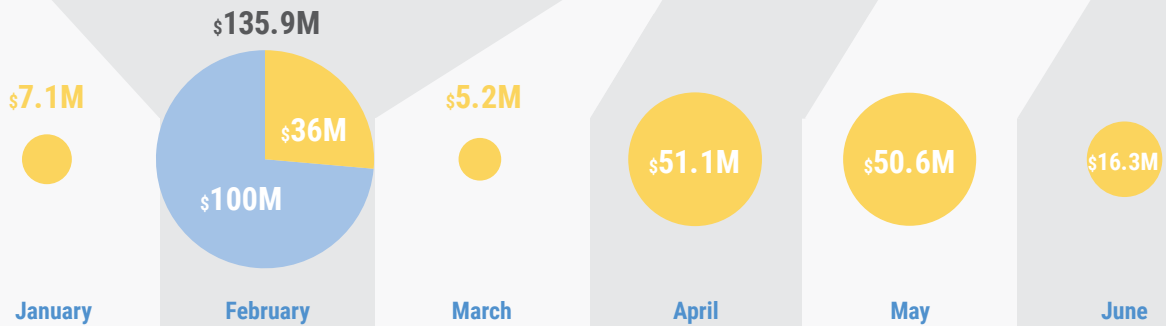
May

June



First round of allocations to **underfunded emergencies**

Famine prevention in Somalia, South Sudan and Yemen



* CAR - Central African Republic
 DRC - Democratic Republic of the Congo
 DPRK - Democratic People's Republic of Korea
 oPt - occupied Palestinian territory

● Rapid Response window
 ● Underfunded Emergencies window

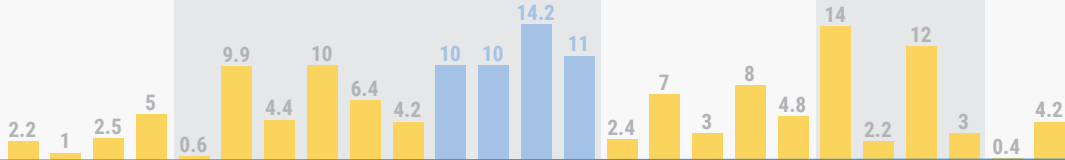
July

August

September

October

November



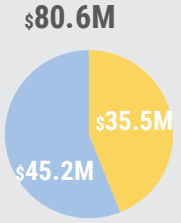
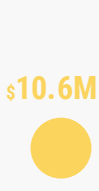
Cyclone and flood response in Bangladesh, Myanmar and Sri Lanka

Second round of allocations to **underfunded emergencies**

Rohingya Refugee Crisis

Relief efforts for **Hurricane Maria and Irma**

Support to conflict in Kasai/**DRC Refugee Crisis**



July

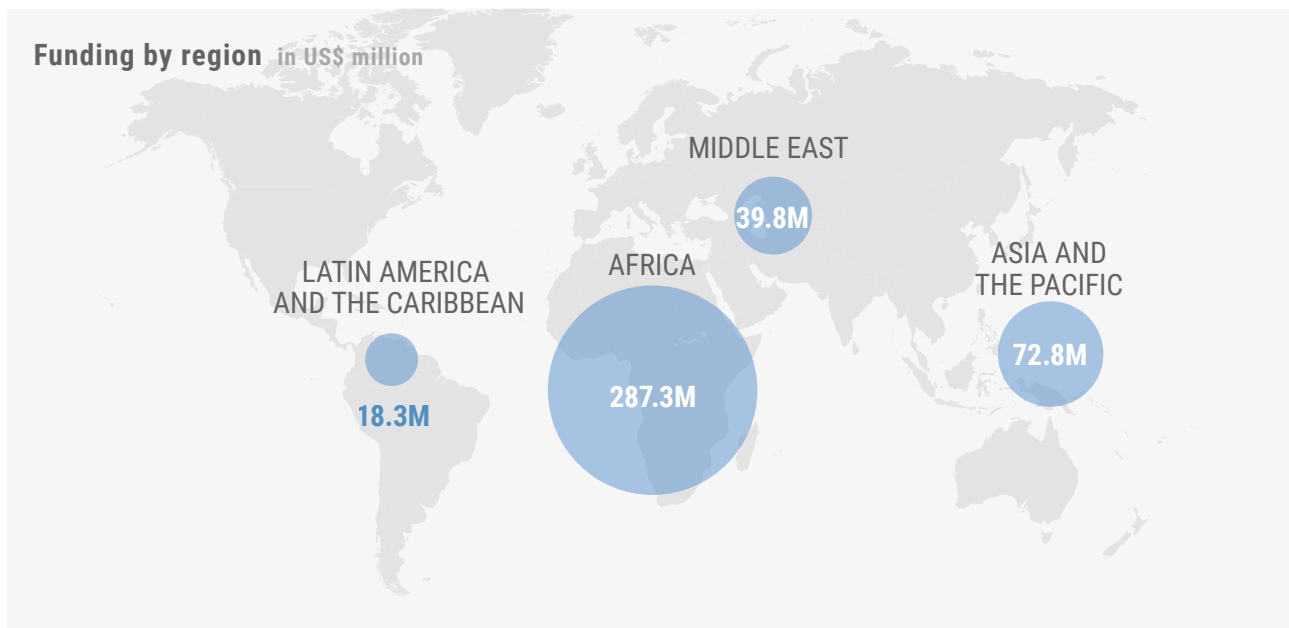
August

September

October

November

2017



BY REGION

Africa absorbed the highest share of CERF funding in 2017: a total of \$287.3 million was allocated towards humanitarian work in African countries struggling with the consequences of conflict and climate change. Allocations to countries in Africa represented 69 per cent of all allocations in 2017, up slightly from 67 per cent in 2016. In 2017, \$196.5 million was allocated towards response to conflict and internal strife in Africa, and \$90.7 million towards climate-related emergencies, particularly drought, in the region. The grants towards climate-related emergencies accounted for 32 per cent of all allocations to Africa in 2017. This correlated with the percentage of CERF funding directed towards climate-related emergencies around the globe, only slightly higher at 34 per cent. The countries that received the highest levels of CERF funding were Somalia and Nigeria, with \$32.9 million and \$31.8 allocated respectively to respond to the threat of famine, and Sudan, where \$29.6 million was disbursed for response to conflict and disease outbreak.

A total of \$72.8 million was allocated to address humanitarian needs in Asia and the Pacific in 2017, compared with \$57.8 million in 2016. Nearly 43 per cent (\$31 million) of

2017 allocations in Asia and the Pacific were for climate-related needs, while 49 per cent (\$35.8 million) addressed needs caused by conflict and internal strife in Afghanistan, Bangladesh, Philippines and Myanmar.

In 2017, CERF made its first ever grants to UN agencies on the ground in Antigua and Barbuda and Dominica, in response to multiple hurricanes. Projects in Latin America and the Caribbean received \$18.3 million from CERF in 2017, all of which targeted response to natural disasters, respectively Hurricane Irma in Cuba, Antigua and Barbuda (August/September) and Hurricane Maria in Dominica (September/October). Humanitarian operations in Peru received CERF funds in response to damage caused by heavy rains resulting in flooding and landslides.

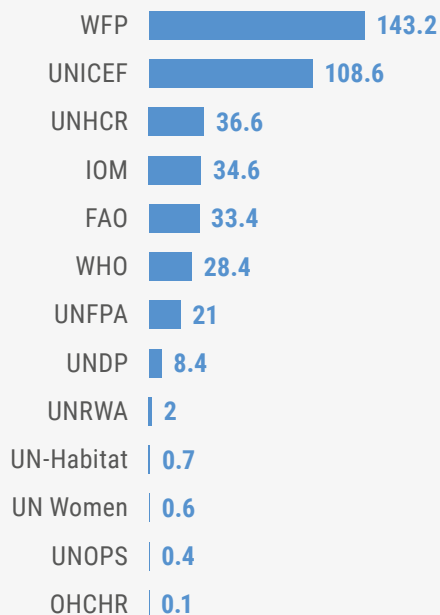
Humanitarian action in the Middle East, Iraq, the oPt and Yemen received nearly \$40 million from CERF in 2017, compared with \$58 million in 2016. Funding to these countries mainly helped deliver essentials for displaced people and provide assistance for cholera-affected people in Yemen.

BY AGENCY

Among UN agencies, the World Food Programme (WFP) received the highest amount of CERF funding for the year, underscoring the prevalence of food insecurity in 2017. The fund allocated \$143.2 million for 63 projects to alleviate food insecurity in 30 countries - more than 25 per cent of the overall funding CERF disbursed during the year. The second and third highest implementers of CERF funds were the United Nations Children's Fund (UNICEF), with \$108.6 million for 111 projects in 33 countries, and the United Nations High Commissioner for Refugees (UNHCR), with \$36.6 million for 32 projects in 16 countries.

CERF maintains a \$30 million loan facility to provide loans to eligible organizations while they are mobilizing resources. In March 2017, the fund provided a \$22 million loan to FAO to enable a response to the drought-affected regions of Somalia. It filled a crucial gap and allowed FAO to immediately save the lives and livelihoods of farmers and herders until additional funds from donors were received. CERF also provided a \$20 million loan to UNRWA to address health and food needs in oPt, Jordan, Syria and Lebanon.

Funding by agency in US\$ million



”

Food assistance is essential to build stability and peace in our world. Yet with war and conflict continuing to rage across multiple countries and regions, millions remain at risk of hunger and famine. With timely support from CERF and its donors, the World Food Programme is working to tackle instability and gain access to meet the food needs of those in greatest need. To put it simply, we rely more than ever on CERF for our life-saving work, and we thank CERF's donors for their unstinting generosity.

– David Beasley, World Food Programme Executive Director

”

UNICEF cannot do all that we do without CERF and its generous donors. Since its establishment, CERF has supported UNICEF's humanitarian response in almost 100 countries, helping us provide millions of children with critical life-saving assistance in their time of need. We renew our call for a larger and more robust CERF – the most effective way to serve the most vulnerable children, wherever they live.

– Henrietta H. Fore, Executive Director of United Nations Children's Fund



CERF and conflict-related/protracted crises

Conflict is one of the primary causes of humanitarian need. Sixty-five per cent (\$271.6 million) of CERF allocations in 2017 were made in response to conflict and internal strife.

”

No one chooses to live through a humanitarian catastrophe. The Netherlands takes responsibility to uphold the right to quick and effective humanitarian assistance for all people affected by crisis. The CERF brings assistance to the most vulnerable groups in the most vulnerable regions of the world. For example, in 2017 it funded a comprehensive response for survivors of sexual and gender-based violence among refugees from the CAR. CERF works for the safety and well-being of women and girls in crisis situations, this makes us a proud supporter of the fund.

— Sigrid Kaag, Minister for Foreign Trade and Development Cooperation of the Netherlands



The informal refugee settlement of Garin-Wazam, located along the RN1 road in Diffa region, Niger. © UNICEF/Tremeau

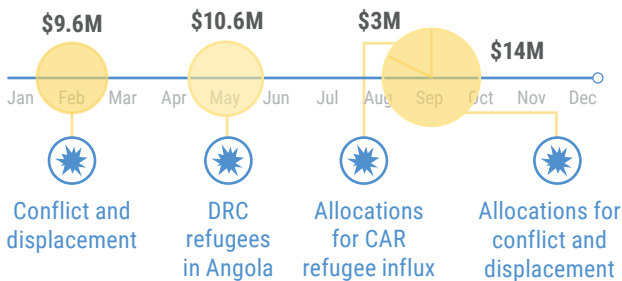
Allocations to Democratic Republic of the Congo



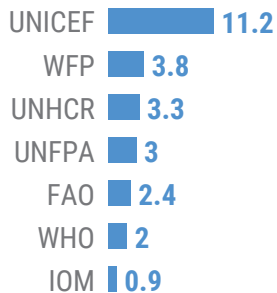
Total allocations
\$26.6 million

Allocation window
Rapid Response

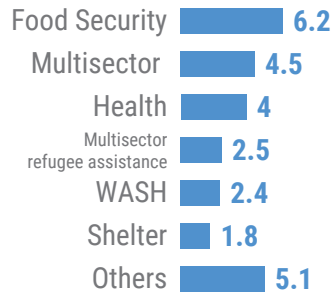
Timeline



Funding by agency in US\$ million



Funding by sector in US\$ million

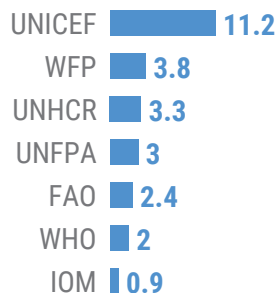


Allocations to Angola for Congolese refugees

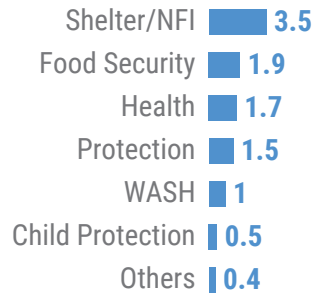
Total allocation
\$10.6 million

Allocation window
Rapid Response

Funding by agency in US\$ million



Funding by sector in US\$ million



The Democratic Republic of the Congo

Humanitarian context

DRC is one of the world's most complex and long-standing humanitarian crises. In early 2017, intercommunal violence in the provinces of Tanganyika and the Kasais escalated dramatically, resulting in the displacement of hundreds of thousands of people within DRC as well as into neighbouring countries. The situation continued to deteriorate throughout the year, compounded by rising food insecurity and a spreading cholera outbreak.

CERF's response

In February 2017, CERF allocated \$9.6 million through the Rapid Response window to humanitarian actors to scale-up presence and response in Tanganyika and Kasai Provinces, targeting 213,055 people. Approximately \$5.1 million went to address needs in Tanganyika, while the remaining \$4.5 million went to support the response in the Kasai. An additional \$14 million was allocated through the Rapid Response window in September 2017 to address the urgent humanitarian needs arising from the sharp deterioration of the situation in areas affected by violence in Kasai Province, the Bantou-Batwa intercommunal conflict in the east and the activities of armed groups in South Kivu. Through this CERF Rapid Response allocation, approximately 809,470 displaced people were reached.

In order to address the needs of the 99,948 most vulnerable refugees from CAR, CERF allocated \$3 million through the Rapid Response window supporting the life-saving activities in the Multisector and Health sectors.

Overall, CERF allocated \$26.6 million to assist 1,122,473 people affected by conflict and displaced people in the DRC.

DRC: Overcoming fear to reach reproductive care in Kasai

Jacqueline Lusambo, 18 years old and pregnant, spent six months living on the run, hiding from the conflict that raged through Kasai Central, in DRC.

“When violence between Government forces and resistance groups broke out, many villages were burned to the ground and people were abducted or killed,” she recalls. Together with her family, Jaqueline fled her home. Soon after leaving her village, she lost her husband and was left alone to care for her one-year-old son while searching for safety.

Jacqueline is just one of an estimated 1.4 million people in Kasai who fled their homes in 2017 to escape conflict. She has not heard from her husband and is uncertain if he is one of the thousands killed as violence ravaged the countryside.

The United Nations Population Fund (UNFPA), together with Caritas Congo and Caritas Kananga, is helping women like Jaqueline by providing psychosocial and medical services, including mobile reproductive health clinics, and community prevention and awareness on gender-based violence (GBV). More than 800 GBV survivors and 2,484 vulnerable women and girls were among those receiving dignity kits and psychosocial care.

When she arrived at the mobile clinic in Kalomba, months after she fled her home, Jaqueline received her first antenatal check-up. On the same day, nearly 180 pregnant women along with Jacqueline received urgent care.



Jacqueline Lusambo with her son at the mobile clinic in Kalomba, DRC. © UNFPA DRC

“Mobile clinics are the only way to reach these women and save their lives, as most of them are afraid to go venture out to health centres for antenatal care,” said Dr. Marguerite Kunduma of UNFPA. “The mobile clinics reach areas where health centres and hospitals have been destroyed, and also provide existing health facilities with basic and emergency reproductive health supplies and services.”

UNFPA supplied reproductive health kits to 25 facilities in eight areas heavily affected by conflict. These kits contain supplies needed to manage a range of reproductive health concerns, including emergency obstetric care and post-rape treatment.

“The kits contain enough supplies to last three months and meet the needs of an estimated 450,000 people, including 22,500 pregnant women,” said Dr. Polycarpe Takou, UNFPA’s HC in DRC.

**Allocations
to Yemen**



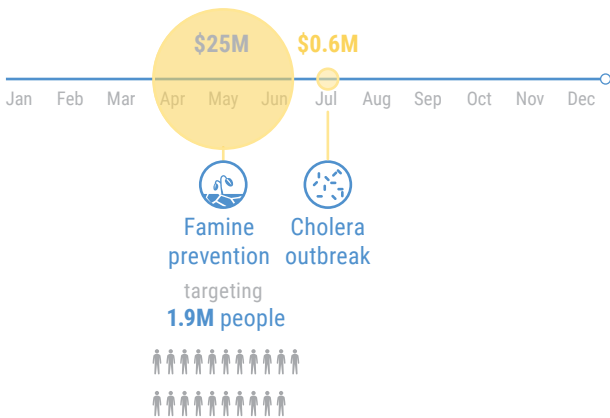
Total allocations

\$25.6 million

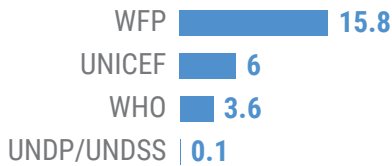
Allocation window

**Rapid
Response**

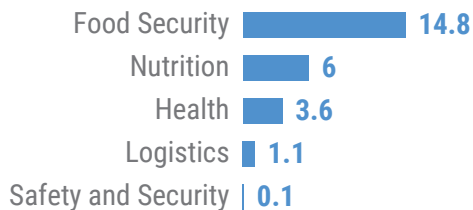
Timeline



Funding by agency in US\$M



Funding by sector in US\$M



Yemen

Humanitarian context

With more than 17 million people – two thirds of the population – not knowing where their next meal would come from, Yemen was recognized as the world’s worst humanitarian crisis in 2017. Since the escalation of conflict in March 2015, more than 3 million people had been internally displaced. By 2017, 45 per cent of the country’s health facilities were no longer functioning, and 10.4 million people lacked access to health services and clean water and sanitation, and were at risk of contagious diseases, such as cholera. Food security and nutrition rapidly deteriorated, as the conflict destroyed people’s livelihoods and deprived many of them of the means to purchase food and meet minimal food and nutrition needs.

CERF response

In May 2017, to mitigate the early effects of a famine-like situation in the country, CERF allocated \$25 million towards nutrition, food security, logistics, coordination and support services, benefiting an estimated 2 million people. Additionally, in July 2017 CERF allocated \$600,000 to increase facilities for transporting cholera relief items.



Ireland is immensely proud of its long-standing support to the CERF. Last year, the CERF was among the first to respond to warnings of potential famine in north-east Nigeria, Somalia, South Sudan and Yemen, helping prevent humanitarian catastrophe for millions of people. Equally, the Rapid Response in fast deteriorating contexts such as Yemen, Bangladesh, and indeed the Caribbean, ensured that life-saving assistance was provided immediately.

– Simon Coveney, Tánaiste and Minister for Foreign Affairs and Trade of Ireland



YEMEN: Cholera treatment centre reunites family

It was a shattering blow to Basheer Thabet, from Sana'a, Yemen, when he learned that his eight children and wife tested positive for cholera.

Basheer's children and wife were suffering from severe diarrhoea and vomiting. After they were hospitalized and medically tested in Al-Thawra Hospital in Sana'a, Basheer received the news. "I thought they were all going to die. At the time, I perceived cholera to be an incurable and fatal disease," Basheer said.

The children, ranging from 3 to 13 years, and their mother, who was nine months pregnant at the time, were referred to the isolation section in Al-Sabeen Hospital in Sana'a. They received medical care and were later moved to the hospital's newly rehabilitated diarrhoea treatment centre, established by WHO, with funding from CERF.

"It took nearly 15 days until my children and wife recovered. These days were an absolute nightmare for me," Basheer recalled. Three months after this experience, Basheer said that a new life was granted to him and his family.

Basheer Thabet with seven of his eight children at his home in Sana'a, Yemen. © WHO Yemen office/ Mr. Sadeq Hasan

Basheer's children after having recovered from cholera. © WHO Yemen office/Mr. Sadeq Hasan



**Allocations to
Rohingya Refugee Crisis**

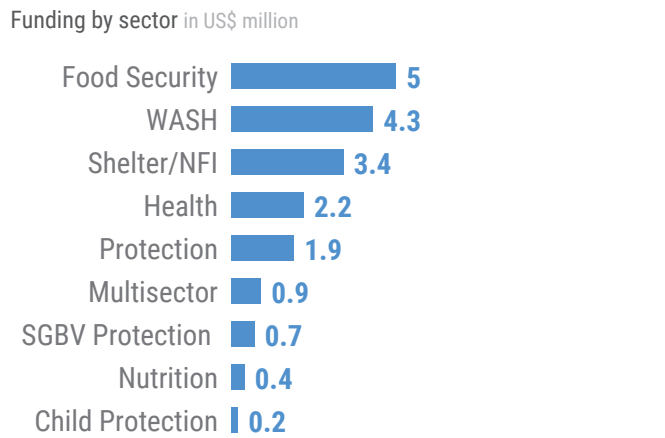
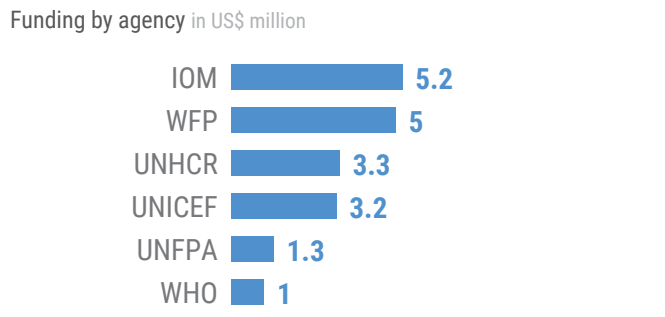
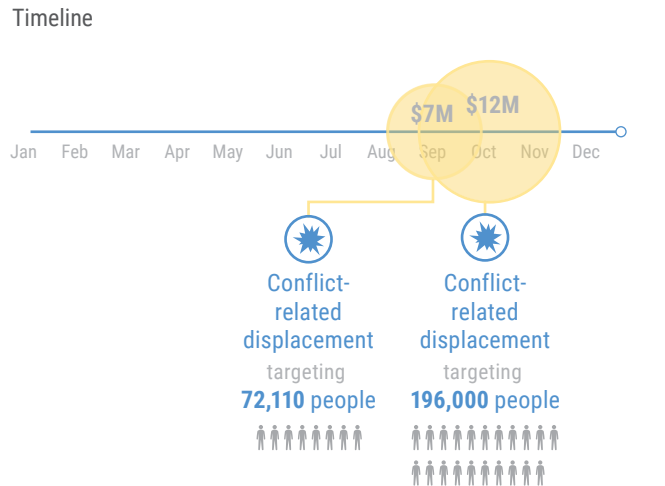
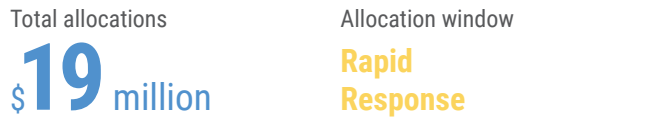


Rohingya Refugee Crisis

Humanitarian context

Escalating violence in Myanmar’s Rakhine State in late August 2017 led to suffering on a catastrophic scale, with hundreds of thousands of people fleeing into neighbouring Bangladesh. The speed and scale of the population movement made it one of the world’s fastest growing refugee crises. Most of the mass influx was into Cox’s Bazar district through different entry points along the land border or marine channel. Most people arrived to existing makeshift settlements and registered camps, while others arrived in host communities and in spontaneous camp sites, areas that had never been used to shelter refugees. All existing camps were overcrowded. As a result, underresourced basic social services in existing camps were stretched to the maximum extent, further limiting access for most of the people who were in dire need of life-saving assistance.

Approximately 1.2 million people – new refugees, prior refugees and host communities – in Bangladesh desperately needed assistance. A revised HRP for the Rohingya Refugee Crisis was released on 4 October 2017 requesting \$12 million. It covered the period from September 2017 to February 2018. The plan targeted 900,000 Rohingya refugees, including 300,000 who were in Cox’s Bazar before the August influx and 300,000 members of the host communities, who were also directly affected by the consequences of the Rohingya Refugee Crisis in Cox’s Bazar.



CERF response

In early September 2017, CERF allocated \$7 million through the Rapid Response window to support time-critical interventions for 72,110 of the most vulnerable people among the 294,000 new arrivals in the district of Cox's Bazar. These interventions were in priority sectors, namely Protection, Food security with Nutrition, WASH, Health and Shelter, for four months. The prioritized caseload was located in the three new settlements sites (Unchiprang, Moiner Ghona and Thangkhal/Burma Para) and in the two official refugee camps (Kutupalong and Nayapara).

As the crisis worsened, CERF released an additional \$12 million in October to further scale up life-saving response efforts for 196,000 refugees in the Kutupalong extension site. In line with the HRP and the CERF prioritization-related discussions, a significant portion of this CERF allocation was dedicated to WASH and health sectors to provide direct life-saving emergency assistance and to prepare for severe life-threatening risks related to a highly probable waterborne disease/cholera outbreak.

Overall, CERF supported the response to the Rohingya refugee crisis in Bangladesh with \$19 million in 2017, reaching 268,110 refugees in need.



In 2017, CERF funds were vital in enabling UNFPA to act quickly to save lives and preserve the health, protection and dignity of women and girls in 28 countries. As the Rohingya crisis unfolded in Bangladesh, for example, CERF funds were readily available for early response, helping UNFPA meet the immediate needs of more than 220,000 affected people and provide life-saving sexual and reproductive health and protection services to newly arrived refugee women and girls. These funds were crucial to garnering additional support, bringing partners to the table and ensuring a harmonized response.

— Dr. Natalia Kanem, United Nations Population Fund Executive Director

Nur Hossen, his wife, Yasmin, and their daughters, Tamjina Munni and Noor, stand outside their shelter in Kutupalong refugee camp, Bangladesh. © UNHCR/Andrew McConnell





A Rohingya boy carries an older relative up a muddy path at the Kutupalong extension site on land allocated by the Bangladesh Government. © UNHCR/Paula Bronstein

BANGLADESH: Rohingya refugees and locals help newcomers in need

Nasima Khatum became a refugee in 1992, at the age of 10. Now a mother, she cooks up large pots of rice over a wood fire to feed famished fellow Rohingya refugees fleeing an outbreak of violence that erupted in Myanmar in late August.

Aided by five other women volunteers, she bags up the steaming rice to feed 400–500 of the neediest children, women and men, stumbling into the area in their thousands under driving monsoon rains.

“We don’t have money, we can give time and labour,” she says. “We came two decades before, we couldn’t just stay home, we had to do something for these new people.”

Nasima is part of a large refugee volunteer force, supplemented by Bangladeshi citizens, mobilizing throughout two official camps in south-east Bangladesh. Working closely with local residents and UNHCR, they are drawing

on years of experience and local knowledge to help respond to the largest refugee emergency the region has seen.

“They are the pillar of every activity that we do, and they have been doing this from the very first day, using their own savings,” says Istiaque Ahmed, an Assistant Protection Officer with UNHCR at Kutupalong refugee camp, which was set up in 1992 – the year Nasima arrived. With CERF funding, UNHCR provided immediate support to community-based efforts to further relieve the pressure on host communities and refugees.

“They were collecting food and rice from door to door, then cooking in the communal kitchens, even before the donor community reacted,” he said.

New arrivals are often rain-soaked, footsore, exhausted and weakened after trekking for a week or more across rough terrain, swollen

creeks and jungle. Getting aid to the most vulnerable is a life-and-death race against time for the volunteers.

“We target those people who are most in need – like pregnant women who have lost their husbands, elderly people and separated children,” said Mohamed Hassan, who reached Bangladesh as a child in 1991 and grew up in the camp.

Drawing on his knowledge of its maze of alleyways, he finds those on the verge of collapse at schools repurposed as emergency shelters, community centres or on the wayside. They get coupons for a nutritious free meal - typically rice, pumpkins, green plantains or lentils - which can be a lifesaver.

“We’ve lived through this ourselves, so we know what it’s like when you don’t eat even once a day,” added Mohamed, a volunteer with the men’s support group, one of several volunteer committees at Kutupalong and its sister refugee camp, Nayapara. “We are doing everything we can to help them.”



Private donations – ranging from mosquito nets, T-shirts, buckets, cooking pots and candles, to rice, lentils, vegetable oil and potatoes – are received by the manager in charge of the camp. Among camp volunteers making sure they reach those who need them most is Nur Kamal. His methodology is simple.

Rohingya women serve hot meals at a community feeding centre at Kutupalong camp, where long-standing refugee volunteers support the new arrivals. © UNHCR/Paula Bronstein

“Yesterday we went to the furthest part where the new refugees are arriving, which no one had reached earlier. We started giving out the donations there, walking back toward the main camp,” explained Nur, 35.

Of all the people he and his team of 30 men and women volunteers helped, he recalls the reaction of one, an old man without a family. “He had been here for several days without any assistance ... The moment we gave him the food and other items, he grabbed hold of me, blessed me and wept. He said: ‘You are the first one who came here to help me.’”

A Rohingya boy shelters under a makeshift tent at Kutupalong camp, as volunteers battle the rains to build communal shelters on land allocated by the Bangladesh Government in Cox’s Bazar. © UNHCR/Paula Bronstein

CERF and natural disasters

CERF responded to several extreme weather events in 2017, with climate-related crises representing 33 per cent (\$140 million) of CERF funding during that year. On 6 September, Hurricane Irma, the most powerful hurricane ever recorded over the Atlantic, bore down on Antigua and Barbuda with category 5 strength, destroying over 90 per cent of the housing in Barbuda, rendering the island uninhabitable. On 8 September, Irma hovered over Cuba, resulting in the evacuation of 2 million people. An estimated 200,000 houses were severely damaged, as were health and educational institutions.

”

In a context of limited resources, donors are facing increasing pressure to respond to the most visible crises, and rising difficulties remain to cover forgotten and chronic crises, in spite of growing needs. The world needs strong determination at the highest level of global political leadership to prevent and resolve conflicts, especially with regard to the so-called forgotten crises and, in this regard, the UN CERF has proven to be a key instrument in the response to these crises.

— HE. Mr. Fernando Garcia Casas, Secretary of State for International Cooperation and Ibero-America of Spain





A boy stands in front of debris in Loubiere, about 15 minutes' drive from Roseau, capital of Dominica, after the severe impact of Hurricane Irma. © UNICEF/Moreno

**Allocations to
Hurricanes Irma and Maria**



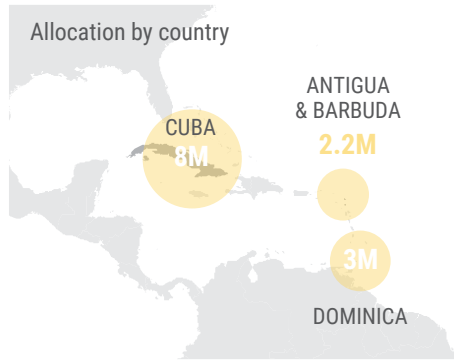
Hurricanes Irma and Maria

Humanitarian context

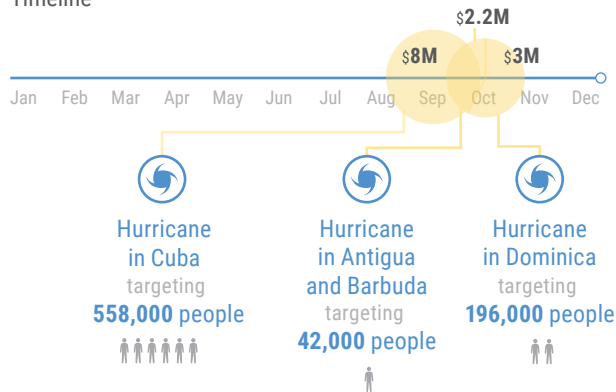
Hurricane Irma - the most powerful hurricane ever recorded over the Atlantic - began its destructive path across the Small Island Developing States of the Caribbean on 5 September 2017. For four days, it battered the region. Irma first bore down on Antigua and Barbuda with category 5 strength in the early hours of 6 September, destroying over 90 per cent of housing in Barbuda, severing communication with its sister isle Antigua and rendering the island uninhabitable for its 1,780 residents. The path of destruction covered Antigua and Barbuda, Sint Maarten, the Virgin Islands, Turks and Caicos, Puerto Rico and Cuba.

Total allocations
\$13.2 million

Allocation window
Rapid Response

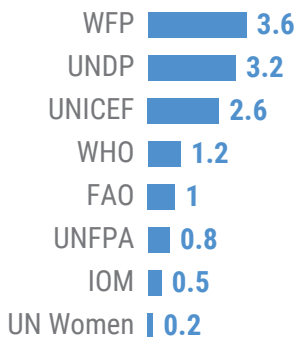


Timeline

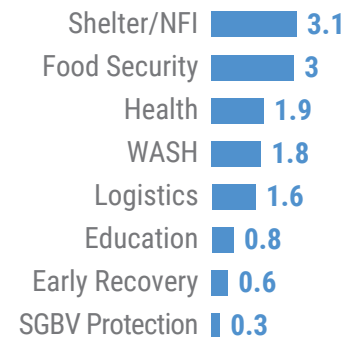


From 8 to 10 September 2017, Hurricane Irma hovered over Cuba. The impact of the hurricane was highly destructive, with approximately 2 million people evacuated during the storm, an estimated 200,000 houses severely damaged, and health and educational institutions, food and medical warehouses, and manufacturing centres extremely affected. There were severe limitations in potable water accessibility and proper sanitation, and the harvest of crops had been lost. Livestock and fish farms suffered severe damages, and most economic sectors, particularly agriculture, energy and tourism, were severely impacted.

Funding by agency in US\$ million



Funding by sector in US\$ million



On 18 September 2017, another category 5 storm, Hurricane Maria, caused widespread damage and destruction in Dominica, one of the poorest countries in the Caribbean. The entire island of 71,293 was affected, with up to 65,000 people suffering direct damage to housing and livelihoods. Dominica's substantial indigenous population, its resident 15,000 children and 34,882 women and girls faced heightened risk in the aftermath of Hurricane Maria. Several communities in the western and southern parts of the country remained cut off from assistance.

CERF response

In the aftermath of Hurricane Irma in September 2017, CERF allocated \$10.1 million through the Rapid Response window for humanitarian assistance to address urgent needs in Cuba, Antigua and Barbuda and other eastern Caribbean islands. An allocation of \$8 million to Cuba helped provide emergency shelter materials, food assistance, agriculture and livelihoods, safe water and sanitation services, health care and education in emergency to 558,801 people in 14 severely affected municipalities over a six-month period. The health sector assisted a broader geographic area and additional beneficiaries through the support to key national health system facilities. With an allocation of \$2.1 million to support the regional response in reaching 42,229 people in Antigua and Barbuda and other eastern Caribbean islands, CERF supported the UN agencies to provide shelter and protection support to the displaced, ensured that basic education could restart, and restored livelihoods through cash for work. CERF also provided funding to WFP to scale up logistical support and air services for the humanitarian operation that spanned multiple islands in the Caribbean.

After Hurricane Maria struck Dominica, CERF allocated \$3 million in October 2017 to address the needs of 71,293 people. CERF funds were critical in re-establishing health and education services, ensuring access to safe water and sanitation, bolstering outbreak prevention and control and providing food, cash transfers, shelter materials, livelihood support and protection services. CERF also supported the necessary logistics capacity to ensure an effective and timely distribution of relief assistance.

Overall, CERF allocated \$13.1 million through the Rapid Response window to respond to the needs caused by Hurricanes Irma and Maria, reaching 672,323 people in need.

DOMINICA: Seeds for life

Theresa Vidal, a farmer and single mother of five, lost not only her entire production when Hurricane Maria struck Dominica, but also her seeds and tools. “Everything was washed away; the river that crosses my land overflowed and took everything I had. I tried to save some seeds but I wasn’t able to,” she says. The storm also destroyed the roof of her house, damaging her household assets. After the hurricane, Theresa found herself in a very difficult situation without any source of income.

One month later, Theresa received CERF-funded emergency seeds and planting tools from FAO and was able to prepare for the next planting season. Several months later, her garden was full of various types of vegetables that she sells at the local market to earn her living. Theresa is proud to have resumed production.

Theresa Vidal in her vegetable garden.
© FAO



Allocations to the Horn of Africa



Drought in the Horn of Africa

Total allocations

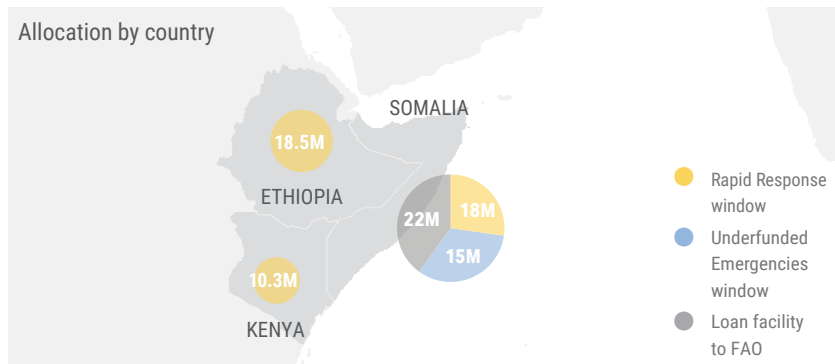
\$71.8 million*

*does not include loan facility

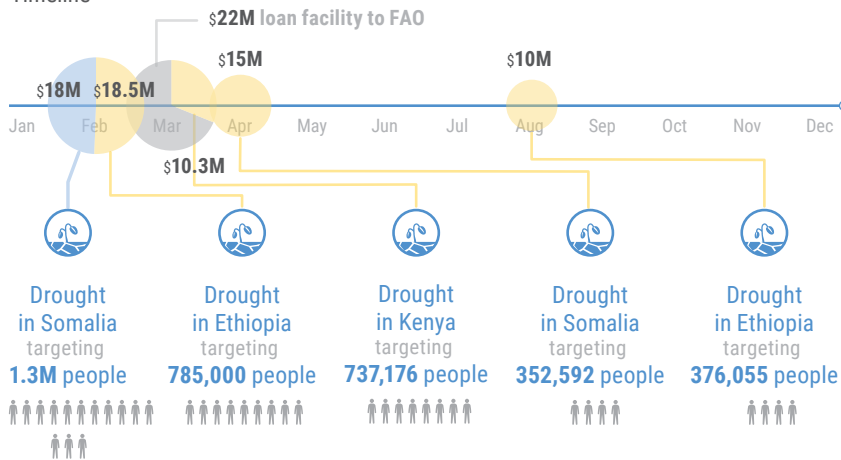
Allocation window

\$53.8M Rapid Response **\$18M** Underfunded Emergencies

Allocation by country



Timeline

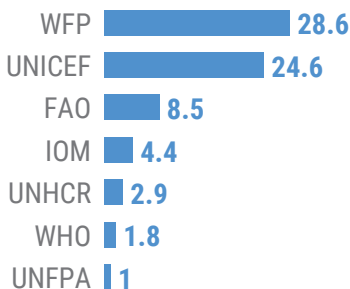


Humanitarian context

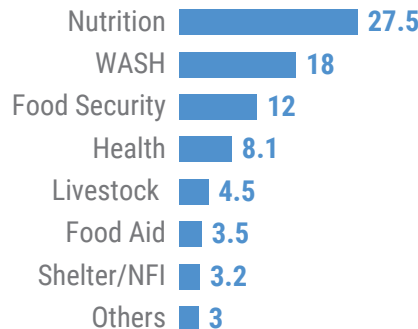
The Horn of Africa faced one of the worst droughts in decades, leaving more than 14 million people in Ethiopia, Kenya and Somalia in urgent need of food assistance. Extensive crop failures, record-low vegetation coupled with livestock death and limited water resources affected the region. In Ethiopia, consecutive poor rainy seasons, water scarcity and disease left millions of people in need of food.

In February, the Famine Early Warning Systems Network (FEWS Net) described alarming drought conditions in southern and eastern lowland areas and in the Somali Region. After losing most of their livestock and livelihoods, the populations faced severe food insecurity, malnutrition and disease outbreaks. The 2017 Humanitarian Requirements Document (HRD) assessed that 8.5 million people were in need. Due to a pipeline break in general food distributions in the Somali Region, severe malnutrition rates began to rise dramatically in July and August. In response, the Government and WFP called for an unprecedented emergency intervention to provide blanket supplementary feeding to children under age 5 and pregnant and lactating women in high-risk districts of the Somali Region. The situation could have further deteriorated if urgent assistance was not provided.

Funding by agency in US\$ million



Funding by sector in US\$ million



CERF response

For 2017, Ethiopia received \$28.5 million from the CERF Rapid Response window. In February 2017, in response to warning signs of continuing drought and increasing food insecurity, an \$18.5 million grant was allocated to jump-start time-critical humanitarian assistance targeting 785,000 drought-affected people in the Somali Region through activities in food security (livestock), health, nutrition and WASH sectors. In August 2017, an additional \$10 million was allocated to stabilize the nutrition situation and reduce malnutrition levels in the Somali Region. This allocation targeted 376,055 people (children, pregnant and lactating women) with nutrition assistance.

In Somalia, efforts were required to sustain underfunded programmes to avert famine in the areas worst affected by drought and for other life-saving interventions at the early stage of the crisis. In February, CERF allocated \$18 million to help cover the needs of 1.3 million drought-affected people in Somalia. CERF supported WASH, shelter and non-food items, logistics, food security, health, nutrition, protection and education sectors. In April, CERF allocated an additional \$15 million in response to drought-related displacement, which had nearly doubled in Somalia between January and February. The allocation was made to benefit 352,592 people in need of health, nutrition and WASH services. Overall, CERF allocated \$33 million in 2017 in response to the humanitarian crisis in Somalia. CERF also released a \$22 million loan to help conflict- and drought-affected people in Puntland, Somaliland and South Central.

CERF allocations were disbursed in complementarity with allocations from the Somalia Humanitarian Fund (SHF) to ensure the best possible outcome. By maximizing the



A mobile team in Somaliland's Marodijex examines patients and hands out nutrition supplies, including iron tablets, to drought-affected families. © IOM/ Mary-Sanyu Osire

comparative advantages of CERF and CBPF (CERF's additionality and disbursement speed and CBPFs' capability of funding local NGOs directly), the humanitarian community rapidly scaled up humanitarian action in Somalia and was able to deliver a stronger collective response. CERF funding prioritized the most immediate needs to help vulnerable people in areas of severe drought in Puntland, Somaliland and South Central, while SHF funding directly supported the NGOs best placed to ensure quick and efficient delivery of assistance.

As part of CERF's early action to support famine prevention, the fund also allocated \$74 million for life-saving activities in north-east Nigeria, Yemen and South Sudan, bringing CERF's total allocations for famine prevention to \$128 million. In north-east Nigeria, CERF allocated \$32 million to reach some 1.3 million people affected by Boko Haram-related violence and food insecurity with emergency relief assistance and common services for humanitarian partners that enable operations. Aid agencies in Yemen received \$25 million for famine prevention and cholera response, including food, nutrition and health supplies, as well as the necessary logistical and security support for all humanitarian partners. In South Sudan, CERF allocated \$16 million to support humanitarian action in locations where famine or elevated risk of famine was declared, and to attend to urgent needs in areas of new or intensified conflict.



Halima trekked for four days in search of water and grass for her family's livestock.
© IOM/Mary-Sanyu Osire

SOMALIA: “Whatever the drought has spared, the hyenas demand”

Young Halima has trekked for four days and nights in search of water. She explained: “We have named this drought Odi Kawayn, which is Somali for ‘something bigger than the elders’. None of our elders has ever seen a drought as severe as this one.”

In April 2017, some 6.2 million people – half of Somalia’s population – needed aid to survive, and 2.9 million of these people did not know where their next meal would come from. Somalia had always been prone to drought, but some parts of the country had not received rain for three consecutive years.

Thanks to early contributions from Member States, CERF was able to release \$18 million in February 2017 through its Underfunded Emergencies window to respond to the first signs of severe drought in Puntland and Somaliland.

Humanitarian partners used the funding to provide urgent primary health care for more than 35,000 people. Mobile health teams from the International Organization for Migration (IOM) travel to hard-to-reach locations in Puntland and Somaliland and deliver health

services to drought-affected communities. On average, each mobile health team comprises one medical doctor, one clinical nurse, one midwife and one pharmacist, and treats 500 patients per week.

According to Dr. Nouradin, a health officer who works on a mobile health team in Somaliland, the most frequent diseases are respiratory tract infections and diarrhoea. Malnourished children are far more susceptible to these illnesses, and the combination is the biggest killer of children in the region. Poor sanitation and health systems have led to rapidly worsening health prospects for millions of people.

Many of the worst-affected people are pastoralists, including 59-year-old Abdullahi who braves the cold every night to protect his goats from hyenas. “Whatever the drought has spared, the hyenas demand,” he said. Livestock are their main source of survival and losing their animals leaves them financially crippled. Across the country, livestock are weak, supplying less milk and meat, and they are worth increasingly less when sold or traded for other food items, such as cereals.

ETHIOPIA: The crippling effects of drought, and the light at the end of the tunnel

Hadra Abdi is facing the worst drought that she can remember. She lives in the Ethiopian Somali Region, where her husband is a cattle herder. Hadra, 25, and her husband have done everything they can to provide for their four young children, but the current drought has stolen a lot from them: their sheep, their cows and their livelihoods.

“In our good times, we used to own 100 goats and sheep, as well as three cattle,” explains Hadra. These livestock were essential for her family, as they gave them the means to survive, allowing them to have meat or milk, and the ability to generate income through local sales.

Unfortunately, the drought was as swift as it was vicious. Hadra was shocked at how quickly she lost over 75 per cent of her livelihood. In less than a year, only 15 goats and one cow had survived the drought’s wrath.

“My husband and I were very worried at how we would be able to buy food and clothes for our kids, or medicine if they got sick,” says Hadra. As part of WFP’s emergency food assistance programme in the Somali Region, which was supported by CERF, Hadra and her family have been receiving a mix of cereals, pulses and oil, which has helped to carry them through these hard times.

Hadra’s story is not unique. She is one of more than 8.5 million people who need food assistance, due to a third consecutive year of

drought. The hardest hit is the Somali Region, where 3.3 million people have been pushed into food insecurity and malnutrition rates have risen to alarming levels.

Since November 2016, families across the Somali Region have lost a great number of livestock, which are the foundation of livelihoods of traditional pastoralists – the majority of people living here. These recurrent climate shocks have sparked ripple effects across the region, as families fight to keep their animals alive, access food to survive and ward off the many diseases that often accompany such a fragile humanitarian situation.

Hadra Abdi with three of her four young children.
© WFP/Michael Tewelde





Rohingya refugees cross the border from Myanmar into Bangladesh through paddy fields near the Anjuman Para crossing point.
© UNHCR/Roger Arnold



CERF response to the global displacement crisis

The global displacement crisis continued into 2017 as more and more people were forced from their homes.

”

Through a \$20 million loan from CERF, UNRWA was able to avoid a disruption in critical humanitarian services for the most vulnerable Palestine refugees across its five fields of operation (West Bank, the Gaza Strip, Jordan, Lebanon and Syria) through food assistance to 1 million people in Gaza, cash assistance to more than 150,000 Palestine refugees in Lebanon, Jordan and West Bank, and hospital services in all five fields.

— Commissioner General Pierre Krähenbühl, United Nations Relief and Works Agency for Palestine Refugees

In 2017, CERF allocated

\$217.6 million

or **65%** of its funding to operations supporting displaced people

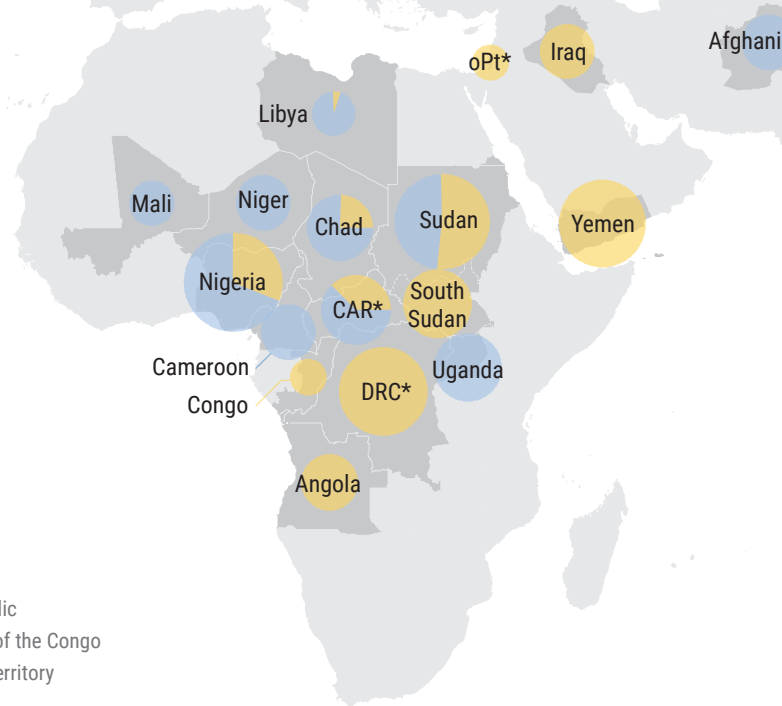
in **20** countries.

- Rapid Response window
- Underfunded Emergencies window

CERF allocations for displaced people



* CAR - Central African Republic
 DRC - Democratic Republic of the Congo
 oPt - occupied Palestinian territory



In South Sudan, where approximately 4 million people had fled their homes since 2013, new clashes in 2017 caused further displacement. Food insecurity and malnutrition reached unprecedented levels. Livelihoods had been decimated, with livestock looted or killed and crops destroyed or delayed due to violence, displacement and unfavourable weather. Communicable diseases spread, and access to safe hygiene and clean water was compromised due to repeated displacement and damaged infrastructure. In May, CERF disbursed \$15 million to address the needs of 368,958 crisis-affected people in South Sudan, 221,375 of them internally displaced. The allocation helped address camp coordination and camp management, health, nutrition,

protection, education, food security, shelter, WASH and logistics.

In Sudan, CERF allocated \$10 million so that the humanitarian country team could meet the needs of 60,000 newly arrived South Sudanese refugees. The funds made it possible to establish a reception centre and expand two existing refugee-hosting sites.

In April, CERF allocated \$15 million to sustain and improve life-saving services for South Sudanese refugees in Uganda. The funds were partly used to establish services in settlements for new arrivals. The response targeted 881,555 people, including 203,436 Ugandan host-community members, through the protection, SGBV, health, food security,



At UNHCR, we continue to count on timely contributions from CERF to allow us to deliver protection and critical assistance without delay. I therefore encourage donors, and especially new donors, to contribute to a stronger and more predictable CERF.

– Filippo Grandi, United Nations High Commissioner for Refugees

early recovery, WASH and multisectoral refugee assistance sectors.

Lake Chad Basin countries continued to face complex and protracted humanitarian displacement emergencies in 2017. About 17 million people in north-east Nigeria, the far north of Cameroon, western Chad and south-east Niger were affected by insecurity and food shortages. By February, more than 2.3 million people were displaced, 7.1 million were food insecure and 515,000 children were suffering from severe acute malnutrition.

CERF provided \$22 million for life-saving interventions in Nigeria. This enabled education, food security, health, nutrition, protection, shelter and WASH activities targeting

2.6 million IDPs and host communities. In July, CERF allocated \$10 million in support of humanitarian hubs in Nigeria so that front-line responders could establish a more permanent and secure humanitarian presence. In Cameroon, CERF allocated \$10 million targeting 270,000 new IDPs affected by the Boko Haram attacks. And in Niger, where conflict had disrupted basic services, CERF allocated \$10 million to benefit 250,000 refugees, returnees, IDPs and people from host communities. In Chad, CERF allocated \$4 million towards food, health and protection for 40,000 vulnerable returnees, and \$11 million for 72,559 Chadian returnees, 16,937 CAR refugees and 56,060 people from host communities.

CHAD: For every girl, dignity

In Chad, the distribution of dignity kits is key to keeping girls in school.

Since the last outburst of violence in CAR in 2013, 60,000 Central African returnees sought refuge in southern Chad. Among them, 17,000 people are still living in the refugee camp of Danamadja, where children can go to school.

Yet girls must overcome many obstacles to stay in school. The lack of sanitation facilities and basic hygiene supplies, such as sanitary pads, is one of the main reasons why girls drop out of school.



”

In the Central African Republic, I did not go to school. We are nomadic stockbreeders and we do not really mix with the rest of the returnees here in Chad, but in school we are all the same. I was given dignity kits and I am more confident when I am in class.

— Saboule Ousmane, 17, Grade 4, Danamadja School.

My parents do not really have the money to buy sanitary pads for me and my sister. Now, I can continue my studies without worrying. It is very precious to me.

— Fadna Abakoura, 15, Grade 3, Danamadja School.

Before coming to Danamadja, I lived in Bangui, CAR, where I lost both my parents. I came here with my grandmother and my six brothers and sisters. Back then, when I had my period, I would not come to school because I did not feel comfortable. Now, I never miss one day.

— Badoul Idriss, 16, Grade 6, Danamadja School.

In 2017, thanks to CERF, UNICEF was able to distribute dignity kits to schoolgirls living in refugee camps and returnee sites in southern Chad. The kits include soap, bleach, water

buckets and sanitary pads to help them to pursue their education in the best conditions possible.



”

I kept going to school even after I had a baby. When I am studying, my grandmother takes care of my child. Sanitary pads were not a priority in the expenses of our family. The dignity kits help me a lot.

– Hadikha Moussa, 18, Secondary School.

It was hard for me to come to school when I had my period. When I went back home with the dignity kit, the girls from my neighbourhood who had quit school wanted to go back.

– Faozea Mahmout, 14, Grade 5, Danamadja School.

I came here with my mother only. She braids hair to have a little money, but it was not enough to buy soap or sanitary pads. The kits have given me the courage to come to school every day.

– Hawa Oumar, 15, Grade 5, Danamadja School.

© UNICEF Chad/
Alliah

3

CERF donors

Despite the challenging fundraising environment, CERF hit a record-high income of \$514.6 million for 2017; an increase of \$64 million over the \$426.3 million received in 2016. A total of \$512.1 million was pledged in 2017, of which \$481.3 million was received by 31 December 2017 (including \$14.3 million received in 2016), and \$33.3 million was received in 2018. The total contributions received for 2017 reached \$514.6 million, higher than the pledged amount due to exchange rate gain.

Many donors increased their contributions to the fund as compared to 2016. These include: Andorra, Australia, Belgium, Chile, Germany, Iceland, Indonesia, Ireland, Japan, Kazakhstan, Luxembourg, the Netherlands, Norway, Philippines, Portugal, South Africa, Spain, the United Arab Emirates, the United Kingdom and the United States.

Fifty-six Member States and observers, one regional authority and private sector donors, including two foundations, contributed to the fund in 2017. To help CERF respond to humanitarian needs, the following donors contributed an additional total of nearly \$100 million on top of their initial 2017 pledges: Andorra, Chile, Germany, Iceland, Ireland, the Netherlands, Norway, Portugal, Spain, Sweden, Switzerland and the United Kingdom. In addition, between 1 January and 31 December 2017, \$0.6 million was received against previous pledges, and nine donors advanced a total of \$6.8 million for 2018.

Approximately 98 per cent of contributions to CERF for 2017 were from the top 20 donors. The largest contribution was received from the United Kingdom, followed by Germany, Sweden, the Netherlands and Norway. The number of Member States and observers

that gave to CERF increased from 52 in 2016 to 56 in 2017.

Six Member States signed new multi-year agreements with CERF in 2017. They were Australia, Belgium, Iceland, Luxembourg, Qatar and the United Kingdom. Norway and Sweden will enter into multi-year agreements with CERF in 2018.

Nine Member States that had not donated to CERF for a while, returned as donors in 2017. They were Bhutan, Bulgaria, Colombia, Côte d'Ivoire, Czech Republic, Lithuania, Qatar, Slovakia and Sri Lanka.

Four CERF-recipient countries — Myanmar, Peru, Sri Lanka, Viet Nam — received allocations from and contributed to CERF in 2017, a testament to their solidarity with the fund.





















From its inception in 2006 until 2017, the fund received cumulative contributions over \$5 billion from 126 Member States and observers, from four regional authorities, and from foundations, corporate donors and individuals. These generous contributions enabled CERF to respond expeditiously to diverse humanitarian emergencies in 100 countries.

The year ended on a positive note for CERF, suggesting that in time the new annual target of \$1 billion may well be attained. At the CERF High-Level Conference on 8 December 2017, donors pledged \$383 million for 2018, an increase of \$111 million compared to the amount pledged at the previous year's conference. CERF also received the first instalment of a multi-year zakat contribution from the Al Jisr Foundation, giving rise to hope that additional funding might be mobilized from similar sources in the future.

Thanks
to its **donors,**
CERF hit a
record-high income of
\$514.6 million

98% of contributions to CERF in 2017 came from CERF's top 20 donors

TOP 20 DONORS

	United Kingdom	102.6
	Germany	82.8
	Sweden	76.0
	Netherlands	71.3
	Norway	53.1
	Ireland	23.9
	Canada	21.8
	Denmark	14.2
	Belgium	14.0
	Australia	8.2
	Finland	7.5
	Switzerland	6.0
	USA	5.0
	Luxembourg	4.9
	Korea	4.0
	Spain	3.5
	Italy	2.5
	New Zealand	2.2
	Russian Federation	1.5
	Japan	1.4
	Others*	8.3

*See page 66 for a list of all donors

CERF donors in 2017:

56 Member States and observers
1 regional authority
Multiple private donors, including
2 foundations

DONORS with

ADDITIONAL CONTRIBUTIONS

	Andorra
	Australia
	Belgium
	Chile
	Germany
	Iceland
	Indonesia
	Ireland
	Japan
	Kazakhstan
	Luxembourg
	Netherlands
	Norway
	Philippines
	Portugal
	South Africa
	Spain
	United Arab Emirates
	United Kingdom
	United States

DONORS with

MULTI-YEAR AGREEMENT

	United Kingdom
	Qatar
	Luxembourg
	Iceland
	Belgium
	Australia

RECIPIENT-COUNTRY

DONORS

	Myanmar
	Peru
	Sri Lanka
	Viet Nam

4 | CERF management

Transparency

Transparency is the cornerstone of accountability, which makes it one of the key priorities for the CERF secretariat. CERF publishes all grant decisions in real time on its website, on the Financial Tracking Service, in the International Aid Transparency Initiative standard and through the Humanitarian Data Exchange. In addition, CERF tracks and publishes information on the second layer of CERF grant implementation, which reflects funding from recipient UN agencies to their implementing partners, thereby providing full transparency of CERF funding from the moment allocation decisions are taken to delivery on the front line.

CERF publishes the methodologies governing decisions on allocations; summaries of country selection processes for Underfunded Emergencies allocations; narrative reports on the use of CERF funds; and a global report on results achieved. These documents, in combination with real-time allocation data, provide full transparency on the operations of the fund.

In 2017 CERF published the second edition of its CERF Results report. The report included key information on people reached, analysis of the strategic value added by the fund, information on CERF implementation partnerships and summaries of reported achievements attained thanks to CERF allocations in 2016. The report presents a comprehensive overview of CERF's achievements in a full one-year funding cycle, and provides donors with a consolidated analysis of the humanitarian results enabled by their annual investment in CERF. The report covers all grants provided by CERF in 2016, implemented in 2016 and 2017, and reported on in full by the end of 2017. The CERF Results report is based on the evidence provided by 12 UN agencies that worked in partnerships with 589 non-UN organizations, and it builds on analysis of an estimated 36,000 pieces of data provided through 68 consolidated RC/HC reports covering the results of 439 CERF-funded projects. The global consolidation of the complex performance information included in the report was possible due to the major progress in developing CERF's Grants Management System and the underlying data management framework.

The full report can be found on:
<http://bit.ly/CERFResultsReport>

”

Sweden is a proud, long-standing, leading donor to the CERF and is impressed by results on speed, transparency and impact.

– Isabella Lövin, Minister for International Development Cooperation and Climate, and Deputy Prime Minister of Sweden

CERF Country Reviews

To reinforce accountability for CERF achievements for the ERC and for stakeholders, each year the CERF secretariat commissions independent reviews of the contribution made by CERF to humanitarian response in selected countries or regions.

In 2017, the CERF secretariat engaged independent consultants to assess the value CERF added to humanitarian response to the El Niño phenomenon. CERF provided approximately \$119 million to El Niño-related activities in 19 countries during the 2015/2016 El Niño cycle.

The review included field visits to review implementation of CERF allocations in seven countries and three regional hubs. The review report was published in March 2018. Apart from focusing on the appropriateness, effectiveness and added value of CERF for the El Niño response, the review also identified lessons for CERF's potential role in supporting early action, particularly in slow-onset emergencies. These findings will help the secretariat to examine ongoing work in a new light, and they will help CERF and its partners to identify possible future operational and strategic changes for the fund in the context of the new \$1 billion funding target.

”

In 2017, CERF helped enable UNHCR to deliver a rapid, life-saving response to new refugee flows from the Central African Republic, the Democratic Republic of the Congo, South Sudan and from Myanmar into Bangladesh.

– Filippo Grandi, United Nations High Commissioner for Refugees

Monitoring

In 2016, the fund developed a guidance note on country-level monitoring of the implementation of CERF allocations. This guidance clarifies roles and responsibilities in tracking the implementation of CERF grants and in ensuring that relevant and timely information is available to RC/HCs. The note was developed in response to requests from field-level partners involved in CERF processes, and it followed the recommendations of several audits and evaluations related to CERF, including audits by the UN Office of Internal Oversight Services.

CERF also created an interim project status update template to facilitate easy information-sharing at the country level. It will help ensure that RC/HCs and other humanitarian actors in each country are kept informed about the implementation of CERF-funded projects.

The guidance note is provided to all RCs/HCs upon approval of each CERF allocation, and the interim project status update template is submitted to RCs/HCs during the implementation period. Subsequent to positive feedback on the usefulness of this interim project status update template, and observations made through field-level audits, completion of the template became mandatory at the end of 2017.

”

As a Zakat foundation, Islamic values and principles are at the heart of everything we do. Partnering with CERF aligns superbly with our mission and vision. Indeed, we see it as an important moral duty to support this concerted strategic effort to accelerate the aid for those in urgent need of humanitarian assistance, preserve human dignity, and protect the most vulnerable.

– Al Jisr Foundation

CERF Advisory Group

Ensuing from General Assembly resolution 60/124, the CERF Advisory Group was established to advise the Secretary-General, through the ERC, on the use and impact of the fund. In 2017, the Secretary-General increased the size of the Advisory Group from 18 to 21 members to strengthen the group and to ensure the diversity of its membership. The group met in May and October. At the May meeting, the Advisory Group discussed innovative finance solutions and private sector funding initiatives to increase contributions to CERF. Discussions also addressed the possibility of increasing CERF allocations in support of early action, and the launch of the first annual report on results achieved with CERF funding in the course of a full year. At the October meeting, the group discussed efforts to strengthen CERF.

The topic of support to early action raised at the May meeting was further discussed, as were ways to broaden the CERF donor base.

Additional information on topics discussed and decisions reached at Advisory Group meetings in 2017 is available on the CERF website: cerf.un.org/about-us/advisory-group

Throughout the year, the CERF secretariat ensured close collaboration with the CERF Advisory Group, encouraging the group's members to be champions of the fund and informing them of key developments to equip them for this advocacy role. Several Advisory Group members played significant roles in ensuring increased contributions from their own Governments in 2017.

Ms. Shaima Al Ali

Deputy Director
International Cooperation
Policies, Ministry
of Foreign Affairs &
International Cooperation
United Arab Emirates

Dr. Salah Almazroa

Director-General
General administration of supply
of the King Salman Humanitarian
Aid and Relief Centre
Saudi Arabia

Dr. Hilal Al-Sayer

President
Kuwait Red Crescent Society,
Board Chairman of Dasman
Diabetes Institute
Kuwait

Ms. María Andrea

Albán Durán^b
Director of Department of
International Cooperation,
Ministry of Foreign Affairs
Colombia

Ms. Rahel Asfaw^a

Director
National Disaster Response
and Rehabilitation Directorate
Ethiopia

Ambassador Manuel Bessler^b

Head of the Swiss Agency for
Development and Cooperation,
Federal Department of
Foreign Affairs
Switzerland

Ms. Judy Cheng-Hopkins

Adjunct Professor
(Peacebuilding)
Columbia University
Malaysia

Ambassador Seokyoung Choi

Ambassador and Permanent
Representative Korea to the
Office of the United Nations
and Other International
Organizations in Geneva
Republic of Korea

Mr. Jesus R.S. Domingo^b

Assistant Secretary,
Office of the United
Nations and International
Organizations, Department of
Foreign Affairs
Philippines

Mr. Per Enarsson^a

Deputy Director-General
and Head of Department
for Conflict and
Humanitarian Affairs, MFA
Sweden

Mr. Peter Felten

Head of Division
Humanitarian Assistance
Policy, International
Organisations, Multilateral
Coordination Federal
Foreign Office
Germany

Mr. James Wallace Isbister^a

First Assistant Secretary
Humanitarian Coordinator for
the Department of Foreign
Affairs and Trade
Australia

Ms. Heather Jeffrey^b

Director-General, International
Humanitarian Assistance,
Global Affairs
Canada

Ms. Keiko Kiyama

Co-President
Board of the NGO Trustees of
Japan Emergency
Japan

Mr. Claus Lindroos^a

Director
Humanitarian Assistance and
Policy Division
Finland



Ms. Alexandra MacKenzie^a
 Director
 Humanitarian Organizations
 and Food Assistance Division
 Canada

Ms. Mairo Mandara^a
 Country Representative of
 Nigeria at the Bill & Melinda
 Gates Foundation
 Nigeria

Ms. Alison Milton^a
 Director - Humanitarian
 Unit, Department of Foreign
 Affairs and Trade
 Ireland

**Ambassador Nozipho
 Mxakato-Diseko**
 Permanent Representative
 of South Africa to the
 United Nations Office
 and other International
 Organisations at Geneva.
 South Africa

Ambassador Per Örneus^b
 Deputy Director-General for
 Multilateral Development
 Cooperation, Ministry of
 Foreign Affairs
 Sweden

Mr. Bruno van der Pluijm^a
 Director General
 Development Cooperation and
 Humanitarian Aid
 Belgium

Mr. Ashraf Shikhaliyev
 Director
 The Azerbaijan International
 Development Agency (AIDA)
 Azerbaijan

Ms. Leni Stenseth
 Director
 Section for Humanitarian
 Affairs, Norwegian MFA
 Norway

Mr. Ricardo Toro Tassara^a
 Director
 National Emergency Office (ONEMI) and
 leading coordinator of the National Civil
 Protection System
 Chile

Ms. Rachel Turner
 Director
 East and Central Africa Department,
 Department for International
 Development (DFID)
 United Kingdom

Mr. Samson Palia Wangusi^b
 Deputy-Secretary, Emergency
 Humanitarian Response and
 Head of the Kenyan Relief and
 Rehabilitation Department
 Kenya

Mr. Jelte van Wieren
 Director
 Stabilization and Humanitarian Aid
 Department at the Dutch Ministry of
 Foreign Affairs
 The Netherlands

From left to right:
 Claus Lindroos,
 Mairo Mandara,
 Alison Milton, Rahel
 Asfaw, Judy Cheng-
 Hopkins, Shaima Al
 Ali, Keiko Kiyama,
 Lisa Doughten, Leni
 Stenseth, Alexandra
 MacKenzie, Per
 Enarsson, Hilal
 Al-Sayer, Peter Felten,
 Bruno van der Pluijm,
 Ashraf Shikhaliyev,
 Ricardo Toro Tassara
 © OCHA/Matteo
 Minasi

a Newly appointed
 member in 2017
 b Term ended in May
 2017

Global reach through CERF partnerships

CERF is mandated to provide grants solely to UN agencies, but many of its grants are implemented by UN agencies in partnership with NGOs, host Governments and Red Cross/Red Crescent societies.

Of the total \$438.9 million in CERF allocations in 2016 (the latest year for which partnership data is available), \$115 million was reported as subgranted by recipient UN agencies to 589 implementing partners across 45 countries. The considerable size of the partnership network for implementing CERF grants demonstrates an unparalleled global reach that would be difficult to achieve through direct donor-funding agreements.

Subgranted funds represented 26 per cent of overall funding allocated by CERF in 2016. This figure does not include the value of in-kind partnership arrangements.

Most of the organizations that implemented CERF funding through subgrants in 2016 were national and local partners. They included 229 national or local NGOs, 216 Government partners and 19 Red Cross/Red Crescent societies. The remaining 125 partners were international NGOs. The agencies that subgranted the most CERF funding were UNICEF (\$44 million), UNHCR (\$33 million) and WFP (\$9.7 million).

”

Since 2014, IOM has been one of the top five recipient agencies of CERF. 2017 was a year when IOM relied on CERF's fast action mechanism for immediate funding during humanitarian crises. CERF supported IOM's operations in Bangladesh, the Democratic Republic of Congo, and the Caribbean islands affected by hurricanes. CERF continues to be a valuable instrument for IOM, allowing for the immediate provision of life-saving assistance to the most vulnerable populations in contexts where protection and assistance are critical for survival.

— Amb William L. Swing, Director General of the International Organization for Migration

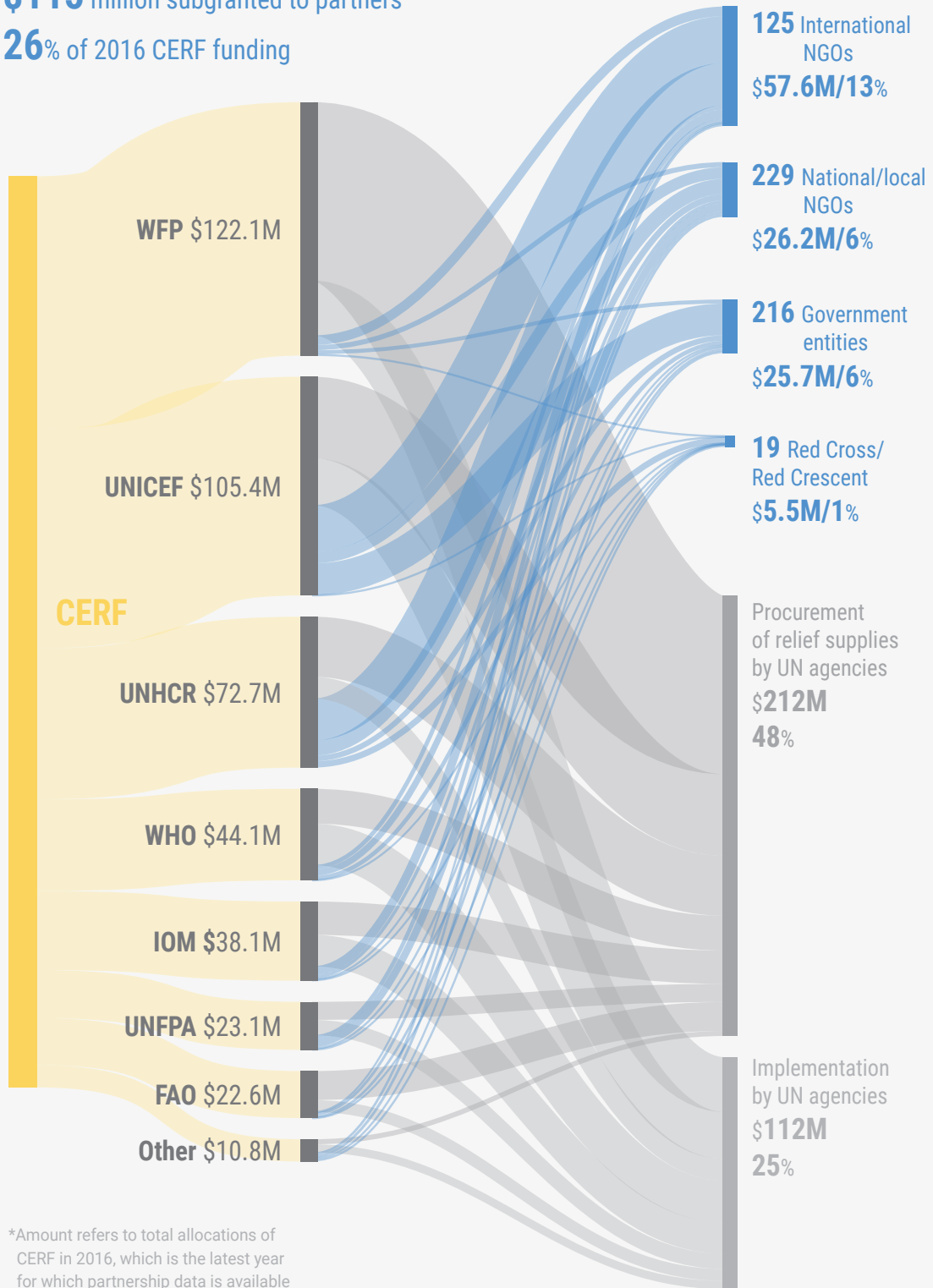
”

The CERF is an invaluable humanitarian financing instrument. It enables needs-based and life-saving support to people affected by humanitarian crises. I believe that the CERF would have an even greater impact if its capacity to support early humanitarian action was further strengthened. Acting early saves lives, mitigates human suffering and reduces the cost of the humanitarian response. The CERF should become a crucial financing tool to better anticipate crises and disasters in addition to responding to them – shaping a forward-looking humanitarian system.

— Heiko Maas, Federal Minister for Foreign Affairs of Germany

CERF partnership

\$439 million total CERF funding*
\$115 million subgranted to partners
26% of 2016 CERF funding



*Amount refers to total allocations of CERF in 2016, which is the latest year for which partnership data is available

Advocacy and engagement

Advocacy and engagement to mobilize resources for CERF continued as a priority in 2017. The CERF secretariat undertook a range of activities, including a Geneva Member States briefing on the use and management of CERF and an event at the 2017 ECOSOC Humanitarian Affairs Segment to discuss progress achieved against World Humanitarian Summit and Grand Bargain commitments through the OCHA-managed pooled funds.

With more than 80,000 followers on Twitter and 1,000 visitors per week on Facebook and the CERF website, the fund's digital platforms have a global reach encompassing a wide range of partners. In 2017, CERF created compelling digital assets showcasing its actions and achievements using different social media platforms. Standard digital advocacy toolkits on CERF actions and themes were developed and shared with key partners, including material on allocations to underfunded emergencies and more prominent crises.

CERF's website, as the fund's digital portal, conveys the global identity of the fund and is a vital tool to showcase CERF to the public. CERF is in the process of developing a new website that will be more interactive, dynamic and compelling. New features will make it simpler to track the fund's allocations and contributions across the world - an important aspect of promoting CERF transparency and accountability.

CERF engaged in public online fundraising campaigns in 2017 and received online donations to support global humanitarian efforts. The fund also received online donations towards underfunded emergencies. CERF partnered with the UN Foundation's Giving Tuesday campaign in 2017. More on CERF's Season for Giving public fundraising campaign can be found here:

<https://cerf.un.org/news/story/choir-girls-conflict-areas-lends-their-voices-cerf>

To follow CERF on Twitter: <https://twitter.com/UNCERF>

To follow CERF on Facebook: <https://www.facebook.com/UnitedNationsCERF>



@UNCERF

>80,000
followers



@UnitedNationsCERF

1,000
visitors per week

cerf.un.org



Giving Tuesday
campaign



Learning engagement

In 2017, the CERF secretariat delivered in-person and interactive workshops and webinars to train UN agency and OCHA field staff, as well as relevant headquarters staff, in navigating the challenges of using funds strategically and prioritizing the most urgent life-saving needs. CERF delivered seven webinars to field staff and conducted two headquarters sessions for stakeholders facilitating CERF processes in the field. This engagement led to more focused, better-prioritized CERF submissions from humanitarian country teams. In 2018, CERF will refocus on field workshops while continuing to deliver headquarters training and online webinars.

”

The CERF is a unique and critical mechanism to provide urgent assistance where and when it is needed. Canada is proud to provide multi-year support to the CERF, especially for women and girls that are often the most affected during a crisis.

– Marie-Claude Bibeau, Minister of International Development and La Francophonie of Canada

Samir Mahmoud from the CERF secretariat holds a training with participants from UNICEF.
© CERF Secretariat



5 | CERF for the future

CERF's humanitarian impact in 2017 and beyond

In 2017, CERF funding helped avert famine, initiate hurricane response and steer much needed attention and aid towards forgotten crises. Record-level CERF funding in 2017 surpassed the annual funding target of \$450 million and was a measure of the trust donors place in the fund for its focus, scope and speed of disbursement in the face of emergency. The level of funding was encouraging in light of the objective of a \$1 billion CERF.

A \$1 billion CERF would ensure the fund continued carrying out the life-saving mission assigned to it by the General Assembly. It would multiply the fund's strategic and catalytic role in bolstering humanitarian funding to protect more people and save more lives.

CERF and the Grand Bargain

Embodying many of the aspirations of the Grand Bargain, CERF is uniquely placed to catalyse improvements in the humanitarian system. In 2017, CERF actively engaged in Grand Bargain processes and explored measures to deliver against its commitments. To this end, CERF pursued the following activities:

Increased use and coordination of cash-based programming

CERF has a long history of funding cash-based interventions when prioritized by country-level partners. CERF ensures that it remains "cash ready" and has recently revised its application and reporting templates to enable better tracking and analysis of cash-transfer programming in CERF-funded projects. CERF also developed additional guidance aimed to support the inclusion of cash-based interventions in CERF applications.

Reduced duplication and management costs

Under the leadership of RC/HCs, CERF funding continued to be jointly prioritized, planned and implemented by country-level partners adhering to a common intersectoral strategy. This helped improve the coherence of humanitarian response and reduce the risk of duplication. CERF also reduced its management costs by one third (from 3 to 2 per cent) in June 2016. In 2017, CERF was able to

free up \$4.2 million of funding for additional programming due to the 2016 reduction in management costs from 3 to 2 per cent.

Improved joint and impartial needs assessments

CERF consistently requires funding proposals to be prioritized against a common response strategy and informed by joint assessment of needs. As such, in 2017 CERF continued to promote joint needs assessments by humanitarian partners, ensuring funding was directed to meeting the most urgent humanitarian needs.

Participation revolution

In 2017, CERF continued to promote enhanced engagement of affected people in the design and delivery of humanitarian assistance. Information on different aspects of accountability to affected people (AAP) is systematically requested throughout the CERF programme cycle. This provides the CERF secretariat with feedback on how AAP commitments have been integrated in CERF-funded projects and allows for periodic AAP analysis.

Reduced earmarking of contributions for humanitarian response

From 2006 to 2017, CERF provided \$5 billion towards humanitarian action in 100 countries using fully flexible, unearmarked contributions. The endorsement by the General Assembly in 2016 of an increase in the annual CERF funding target to \$1 billion underscored

the importance of unearmarked funding for effective and efficient humanitarian action.

Diversification and deepening of the donor base

CERF received more than \$500 million in contributions for the first time in 2017. However, the amount still fell short of the new \$1 billion annual funding target and CERF continues to rely on a small group of donors to contribute a large proportion of its funding. In 2017, \$457 million, or nearly 90 per cent of CERF funding for the year, was provided by 10 donors. This reliance exposes CERF to risks linked to domestic policy changes and fluctuating exchange rates.

The CERF secretariat consistently seeks to diversify its donor base and expand financial support, while at the same time maintaining and, where possible, increasing funding from the strongest supporters of the fund. New and additional support from a more diverse range of Member States, observers, and regional and private entities is needed for CERF to attract the funding necessary to provide urgent assistance in the many and often deepening crises around the globe.

Annexes

ANNEX I: RAPID RESPONSE GRANTS ALLOCATED BY COUNTRY (IN US\$)

COUNTRY	AMOUNT APPROVED	COUNTRY	AMOUNT APPROVED
Angola	10,545,508	Mongolia	1,107,613
Antigua and Barbuda	2,154,461	Mozambique	2,000,095
Bangladesh	24,164,854	Myanmar	6,526,848
Burundi	3,500,011	Nepal	4,787,881
Central African Republic	6,000,028	Nigeria	9,889,471
Chad	3,561,841	occupied Palestinian territory	4,238,419
Cuba	7,999,469	Peru	5,167,962
Democratic People's Republic of Korea	6,351,013	Philippines	2,477,274
Democratic Republic of the Congo	26,564,545	Congo	4,371,548
Dominica	3,011,838	Sudan	15,456,560
Ethiopia	28,512,690	Somalia	15,033,541
Iraq	10,000,001	South Sudan	15,524,589
Kenya	10,329,268	Sri Lanka	7,196,273
Libya	357,812	Viet Nam	4,213,259
Madagascar	4,999,601	Yemen	25,553,107
		Zimbabwe	1,585,201
		Total	273,182,581

ANNEX II: UNDERFUNDED EMERGENCIES GRANTS ALLOCATED BY COUNTRY (IN US\$)

COUNTRY	ROUND I	ROUND II	TOTAL
Afghanistan		9,996,905	9,996,905
Cameroon	10,005,413		10,005,413
Central African Republic		9,995,626	9,995,626
Chad		10,994,963	10,994,963
Democratic People's Republic of Korea	5,996,745		5,996,745
Libya	5,997,815		5,997,815
Madagascar	5,960,822		5,960,822
Mali	6,905,824		6,905,824
Niger	10,058,848		10,058,848
Nigeria	21,997,157		21,997,157
Sudan		14,169,983	14,169,983
Somalia	17,959,294		17,959,294
Uganda	14,986,704		14,986,704
Total	99,868,622	45,157,477	145,026,099

ANNEX III: TOTAL GRANTS ALLOCATED BY COUNTRY AND WINDOW (IN US\$)

COUNTRY	RAPID RESPONSE	UNDERFUNDED EMERGENCIES	TOTAL (US\$)
Afghanistan		9,996,905	9,996,905
Angola	10,545,508		10,545,508
Antigua and Barbuda	2,154,461		2,154,461
Bangladesh	24,164,854		24,164,854
Burundi	3,500,011		3,500,011
Cameroon		10,005,413	10,005,413
Central African Republic	6,000,028	9,995,626	15,995,654
Chad	3,561,841	10,994,963	14,556,804
Congo	4,371,548		4,371,548
Cuba	7,999,469		7,999,469
Democratic People's Republic of Korea	6,351,013	5,996,745	12,347,758
Democratic Republic of the Congo	26,564,545		26,564,545
Dominica	3,011,838		3,011,838
Ethiopia	28,512,690		28,512,690
Iraq	10,000,001		10,000,001
Kenya	10,329,268		10,329,268
Libya	357,812	5,997,815	6,355,627
Madagascar	4,999,601	5,960,822	10,960,423
Mali		6,905,824	6,905,824
Mongolia	1,107,613		1,107,613
Mozambique	2,000,095		2,000,095
Myanmar	6,526,848		6,526,848
Nepal	4,787,881		4,787,881
Niger		10,058,848	10,058,848
Nigeria	9,889,471	21,997,157	31,886,628
occupied Palestinian territory	4,238,419		4,238,419
Peru	5,167,962		5,167,962
Philippines	2,477,274		2,477,274
Somalia	15,033,541	17,959,294	32,992,835
South Sudan	15,524,589		15,524,589
Sri Lanka	7,196,273		7,196,273
Sudan	15,456,560	14,169,983	29,626,543
Uganda		14,986,704	14,986,704
Viet Nam	4,213,259		4,213,259
Yemen	25,553,107		25,553,107
Zimbabwe	1,585,201		1,585,201
Total	273,182,581	145,026,099	418,208,680

ANNEX IV: BREAKDOWN OF ALLOCATIONS BY SECTOR AND WINDOW (IN US\$)

SECTOR	RAPID RESPONSE	UNDERFUNDED EMERGENCIES	TOTAL
Agriculture	16,567,956	17,115,410	33,683,366
Camp Management	2,765,641		2,765,641
Common Services and Coordination	10,410,941	5,845,674	16,256,615
Early Recovery	1,301,154	800,346	2,101,500
Education	4,444,923	4,278,381	8,723,304
Food	60,484,995	30,073,354	90,558,349
Health	35,250,021	16,325,170	51,575,191
Mine Action		297,570	297,570
Multisector	9,115,389	15,783,436	24,898,825
Nutrition	47,448,978	17,291,165	64,740,143
Protection	14,148,905	11,296,983	25,445,888
Shelter and Non-Food Items	26,678,915	13,473,454	40,152,369
Water, Sanitation and Hygiene	44,564,763	12,445,156	57,009,919
Total	273,182,581	145,026,099	418,208,680

ANNEX IV: BREAKDOWN OF ALLOCATIONS BY AGENCY AND WINDOW (IN US\$)

AGENCY	RAPID RESPONSE	UNDERFUNDED EMERGENCIES	TOTAL
Food and Agriculture Organization	16,160,343	17,269,913	33,430,256
International Organization for Migration	24,315,751	10,331,245	34,646,996
Office of the High Commissioner for Human Rights	111,590		111,590
United Nations Children's Fund	76,256,769	32,363,558	108,620,327
United Nations Development Programme	7,616,990	800,346	8,417,336
United Nations Entity for Gender Equality and the Empowerment of Women	248,975	351,512	600,487
United Nations High Commissioner for Refugees	19,752,075	16,896,126	36,648,201
United Nations Human Settlements Programme	674,999		674,999
United Nations Office for Project Services		431,438	431,438
United Nations Population Fund	12,884,497	8,148,470	21,032,967
United Nations Relief and Works Agency	2,010,700		2,010,700
World Food Programme	94,246,785	48,944,133	143,190,918
World Health Organization	18,903,107	9,489,358	28,392,465
Total	273,182,581	145,026,099	418,208,680

ANNEX IV: BREAKDOWN OF ALLOCATIONS BY EMERGENCY TYPE AND WINDOW (IN US\$)

EMERGENCY TYPE	RAPID RESPONSE	UNDERFUNDED EMERGENCIES	TOTAL
Conflict Related and Internal Strife	156,460,748	115,109,238	271,569,986
Disease Outbreaks	600,000		600,000
Natural Disasters	116,121,833	23,920,116	140,041,949
Other		5,996,745	5,996,745
Total	273,182,581	145,026,099	418,208,680

ANNEX IV: BREAKDOWN OF ALLOCATIONS BY REGION AND WINDOW (IN US\$)

EMERGENCY TYPE	RAPID RESPONSE	UNDERFUNDED EMERGENCIES	TOTAL
Eastern Africa	81,484,996	38,906,820	120,391,816
Eastern Asia	7,458,626	5,996,745	13,455,371
Latin America and the Caribbean	18,333,730		18,333,730
Middle Africa	51,043,470	30,996,002	82,039,472
Nothern Africa	15,814,372	20,167,798	35,982,170
South-Eastern Asia	13,217,381		13,217,381
Southern Asia	36,149,008	9,996,905	46,145,913
Western Africa	9,889,471	38,961,829	48,851,300
Western Asia	39,791,527		39,791,527
Total	273,182,581	145,026,099	418,208,680

ANNEX V.A: CONTRIBUTIONS PLEDGED BY MEMBER STATES AND OBSERVERS (IN US\$)

COUNTRY	PLEDGED CONTRIBUTIONS	COUNTRY	PLEDGED CONTRIBUTIONS
Andorra	23,867	Monaco	52,428
Armenia	5,000	Myanmar	10,000
Australia	8,226,874	Netherlands	71,266,300
Belgium	13,963,750	New Zealand	2,176,800
Bhutan	1,500	Norway	53,066,570
Bulgaria	20,000	Pakistan	10,000
Canada	21,844,119	Peru	4,006
Chile	40,000	Philippines	50,000
China	500,000	Portugal	104,110
Colombia	112,500	Qatar	1,000,000
Côte d'Ivoire	10,000	Republic of Korea	4,000,000
Cyprus	11,662	Russian Federation	1,500,000
Czech Republic	38,171	San Marino	2,487
Denmark	14,233,862	Saudi Arabia	150,000
Estonia	106,220	Singapore	50,000
Finland	7,511,000	Slovakia	60,155
Germany	82,786,000	South Africa	487,257
Iceland	765,714	Sovereign Military Order of Malta	1,000
India	500,000	Spain	3,475,600
Indonesia	220,000	Sri Lanka	5,000
Ireland	23,900,000	Sweden	75,978,438
Italy	2,470,400	Switzerland	6,041,235
Japan	1,402,809	Thailand	20,000
Kazakhstan	50,000	Turkey	450,000
Kuwait	1,000,000	United Arab Emirates	1,250,000
Liechtenstein	200,541	United Kingdom	102,619,750
Lithuania	21,734	United States of America	5,000,000
Luxembourg	4,872,780	Viet Nam	10,000
		Total	513,679,635

ANNEX V.B: CONTRIBUTIONS PLEDGED BY REGIONAL AND LOCAL AUTHORITIES (IN US\$)

COUNTRY	PLEDGED CONTRIBUTIONS
Belgian Government of Flanders	625,860
Total	625,860

ANNEX V.C: CONTRIBUTIONS BY PRIVATE SECTOR, INDIVIDUALS AND ORGANIZATIONS (IN US\$)

COUNTRY	PLEDGED CONTRIBUTIONS
Al Jisr Foundation	250,000
Private donations outside UN Foundation (under \$10,000)	6,854
Private donations through UN Foundation (under \$10,000)	51,088
Waterloo Foundation	13,192
Total	321,134

Donate to CERF

Member States, observers and other authorities

OCHA Donor Relations Section in
Geneva, Switzerland

Mose An

Humanitarian Affairs Officer

E-mail: an@un.org

Tel: +41 22 917 1091

OCHA External Relations and Partnerships
Section in New York, United States

Chunyao Yi (Ms)

Humanitarian Affairs Officer

E-mail: yil@un.org

Tel: +1 917 367 2098

Private donors and individuals

1 Online donations

Visit: <http://bit.ly/GIVETOCERF>

2 Bank transfer to CERF

Contact the CERF secretariat in New York,
United States

Chulmin Kang

Chief, Finance and

Administration Unit

kang@un.org

+1 212 963 6362

Zhendai Yang

Finance Officer

yangz@un.org

+1 212 963 3193

3 Payment by cheque

Cheques need to be made out to the United
Nations Foundation. The memo line of the
cheques should read "Donation to CERF."

Cheques should be mailed to:

United Nations Foundation/Central Emergency
Response Fund

P.O. Box 96721

Washington, D.C. 20090-6721, USA

Please include your name and contact
details so that we can track and respond to
your contribution accordingly. Note: US tax-
deductible donations can also be made via
money order or wire transfer.

**CERF was born out of necessity and it
continues through generosity.
Donors enable CERF to support
emergency life-saving humanitarian
activities throughout the world.
As crises persist, so does our resolve.
With your help, we respond.**

cerf.un.org

[@UNCerf](https://twitter.com/UNCerf)

facebook.com/UnitedNationsCERF



United Nations